



**Water Monitoring Result at C7 - Windsor House
Mid-Flood Tide**

Date	Time	Weater Condition	Sampling Depth m		Water Temperature °C			pH			Salinity ppt			DO Saturation %			DO mg/L			Turbidity NTU			Suspended Solids mg/L	
					Value	Average	Value	Average	Value	Average	Value	Average	Value	Average	Value	Average	Value	Average	Value	Average	Value	Average	Value	Average
29/12/2014	9:58	Fine	Middle	-	17.40	17.40	17.40	8.19	8.19	8.19	31.14	31.14	31.15	79.7	79.0	79.3	6.34	6.28	6.27	4.57	4.56	4.55	3	3.00
	10:00		Middle	-	17.40	17.40		8.19	8.19		31.15	31.15		79.4	79.1		6.24	6.21		4.53	4.53			
31/12/2014	14:58	Fine	Middle	-	18.60	18.60	18.70	8.12	8.12	8.12	31.35	31.35	31.35	88.1	88.3	88.5	6.82	6.84	6.85	3.50	3.52	3.52	4	4.00
	15:00		Middle	-	18.80	18.80		8.11	8.11		31.34	31.34		88.3	89.2		6.83	6.90		3.52	3.55			
3/1/2015	17:29	Fine	Middle	-	17.50	17.50	17.55	8.31	8.31	8.29	31.37	31.37	31.37	77.2	76.5	75.9	6.11	6.06	6.01	2.43	2.42	2.42	3	3.50
	17:31		Middle	-	17.60	17.60		8.26	8.26		31.37	31.37		75.4	74.6		5.96	5.90		2.41	2.40			
6/1/2015	9:30	Fine	Middle	-	18.90	18.90	18.95	8.17	8.17	8.17	31.41	31.41	31.41	87.0	87.3	87.2	6.70	6.73	6.72	3.40	3.41	3.41	2	2.00
	9:32		Middle	-	19.00	19.00		8.17	8.17		31.41	31.41		87.1	87.2		6.71	6.72		3.42	3.42			
8/1/2015	-	-	Middle	-	-	-	-	-	-	-	-	-	-	-	-	-	-	-	-	-	-	-	-	-
	-		Middle	-	-	-		-	-		-	-		-	-		-	-		-	-			
10/1/2015	7:50	Fine	Middle	-	17.20	17.20	17.15	8.15	8.15	8.15	31.12	31.12	31.13	79.0	79.6	79.5	6.31	6.36	6.35	3.42	3.43	3.44	<2	<2
	7:52		Middle	-	17.10	17.10		8.15	8.15		31.13	31.13		79.6	79.7		6.36	6.37		3.44	3.45			
12/1/2015	10:25	Fine	Middle	-	17.60	17.60	17.60	8.13	8.13	8.12	31.04	31.04	31.05	75.0	77.1	76.5	5.97	6.11	6.07	5.76	5.77	5.65	4	5.00
	10:27		Middle	-	17.60	17.60		8.11	8.11		31.05	31.05		77.1	76.9		6.11	6.10		5.56	5.49			
14/1/2015	14:50	Fine	Middle	-	17.90	17.90	17.95	7.96	7.96	7.96	31.26	31.26	31.29	74.7	75.0	74.6	5.86	5.89	5.85	6.94	6.54	6.60	3	4.00
	14:52		Middle	-	18.00	18.00		7.95	7.95		31.31	31.31		74.6	74.0		5.86	5.80		6.52	6.39			
16/1/2015	14:56	Fine	Middle	-	18.30	18.30	18.45	8.14	8.14	8.13	31.00	31.00	31.00	89.3	90.8	90.6	6.96	7.07	7.05	2.47	2.47	2.51	4	4.00
	14:58		Middle	-	18.60	18.60		8.12	8.12		30.99	30.99		91.3	90.8		7.11	7.07		2.54	2.55			
19/1/2015	17:10	Fine	Middle	-	17.90	17.90	18.00	8.05	8.05	8.05	30.81	30.81	30.82	85.6	84.6	83.7	6.74	6.67	6.60	4.08	4.10	4.11	4	3.50
	17:12		Middle	-	18.10	18.10		8.05	8.05		30.82	30.82		82.3	82.4		6.48	6.49		4.13	4.13			
21/1/2015	18:50	Fine	Middle	-	17.50	17.50	17.50	8.04	8.04	8.04	30.93	30.93	30.94	81.4	79.9	79.0	6.47	6.34	6.27	2.59	2.59	2.61	4	3.50
	18:52		Middle	-	17.50	17.50		8.04	8.04		30.95	30.95		77.1	77.4		6.12	6.14		2.62	2.65			
23/1/2015	10:10	Fine	Middle	-	17.00	17.00	17.00	8.04	8.04	8.04	31.07	31.07	31.07	82.0	83.2	82.3	6.57	6.67	6.59	3.38	3.34	3.35	6	5.50
	10:12		Middle	-	17.00	17.00		8.04	8.04		31.06	31.06		82.2	81.6		6.59	6.54		3.33	3.33			
26/1/2015	10:45	Fine	Middle	-	17.90	17.90	18.00	8.00	8.00	8.00	31.03	31.03	31.03	79.1	80.1	79.6	6.22	6.29	6.25	3.35	3.35	3.36	7	7.50
	10:47		Middle	-	18.10	18.10		8.00	8.00		31.02	31.02		79.8	79.4		6.27	6.23		3.37	3.37			

Remarks:

Single underline denotes exceedance over Action Level.

Double underline denotes exceedance over Limit Level.

Due to malfunctioning of the intake transfer pump and resulting unavailability of seawater supply to Windsor House cooling intake pump house at the designated water tank, the water quality monitoring at the monitoring station C7 was cancelled on 8 Jan 2015 during flood tide and ebb tide.



**Water Monitoring Result at C1 - HKCEC Extension
Mid-Flood Tide**

Date	Time	Weather Condition	Sampling Depth		Water Temperature		pH		Salinity		DO Saturation		DO		Turbidity		Suspended Solids							
			m		°C		-		ppt		%		mg/L		NTU		mg/L							
					Value	Average	Value	Average	Value	Average	Value	Average	Value	Average	Value	Average	Value	Average						
29/12/2014	13:57	Fine	Middle	2.5	17.70	17.70	17.70	7.89	7.90	7.90	32.10	32.10	32.10	70.0	69.3	69.3	5.49	5.44	5.44	1.96	1.96	1.94	3	3.00
	13:59		Middle	2.5	17.70	17.70		7.90	7.90		32.09	32.09		69.0	69.0		5.42	5.42		1.93	1.91		3	
31/12/2014	13:45	Fine	Middle	2.5	18.80	18.80	18.85	8.08	8.08	8.09	31.60	31.60	31.58	82.7	80.7	81.6	6.33	6.17	6.24	4.47	4.40	4.42	2	2.50
	13:47		Middle	2.5	18.90	18.90		8.09	8.09		31.56	31.56		81.7	81.2		6.26	6.21		4.40	4.40		3	
3/1/2015	16:19	Fine	Middle	3.0	17.60	17.60	17.70	8.19	8.19	8.20	30.56	30.56	30.56	80.8	80.0	80.4	6.44	6.40	6.44	2.45	2.45	2.46	2	2.00
	16:21		Middle	3.0	17.80	17.80		8.20	8.20		30.56	30.56		80.2	80.7		6.42	6.51		2.45	2.47		<2	
6/1/2015	8:33	Fine	Middle	3.0	18.50	18.50	18.60	8.16	8.16	8.17	31.60	31.60	31.60	84.7	83.5	83.4	6.56	6.46	6.46	2.93	2.89	2.93	4	4.00
	8:35		Middle	3.0	18.70	18.70		8.17	8.17		31.59	31.59		83.1	82.4		6.42	6.38		2.91	2.98		4	
8/1/2015	9:34	Fine	Middle	2.5	18.10	18.10	18.05	7.50	7.50	7.48	35.63	35.63	35.06	73.8	72.2	72.0	5.62	5.00	5.38	6.04	5.94	5.89	3	3.00
	9:36		Middle	2.5	18.00	18.00		7.46	7.46		34.48	34.48		71.8	70.1		5.47	5.42		5.80	5.76		3	
10/1/2015	10:32	Fine	Middle	3.0	17.70	17.70	17.70	7.56	7.56	7.57	32.59	32.59	32.59	63.6	63.1	63.0	4.93	4.88	4.89	3.15	3.27	3.25	2	2.50
	10:34		Middle	3.0	17.70	17.70		7.58	7.58		32.59	32.59		62.8	62.5		4.88	4.86		3.28	3.28		3	
12/1/2015	11:17	Fine	Middle	3.0	17.60	17.60	17.65	7.43	7.43	7.51	31.68	31.72	31.72	68.2	68.1	68.3	5.37	5.37	5.38	3.48	3.45	3.44	4	3.50
	11:19		Middle	3.0	17.70	17.70		7.58	7.58		31.73	31.73		68.5	68.4		5.40	5.37		3.41	3.40		3	
14/1/2015	13:47	Fine	Middle	2.5	18.30	18.30	18.45	7.84	7.84	7.85	31.72	31.72	31.72	82.1	85.8	85.2	6.61	6.65	6.67	2.93	2.94	2.94	3	3.00
	13:49		Middle	2.5	18.60	18.60		7.85	7.85		31.72	31.72		86.6	86.4		6.71	6.69		2.94	2.94		3	
16/1/2015	14:16	Fine	Middle	3.0	17.30	17.30	17.35	7.77	7.77	7.82	31.63	31.63	31.65	71.0	70.3	70.8	5.64	5.59	5.62	1.90	1.97	1.92	4	4.00
	14:18		Middle	3.0	17.40	17.40		7.87	7.87		31.67	31.67		70.7	71.1		5.60	5.63		1.91	1.90		4	
19/1/2015	15:05	Fine	Middle	3.0	17.80	17.80	13.40	8.05	8.05	8.05	31.04	31.04	31.03	87.8	87.8	87.4	6.92	6.92	6.89	4.06	4.07	4.05	5	5.00
	15:07		Middle	3.0	0.00	18.00		8.05	8.05		31.02	31.02		86.1	88.0		6.77	6.93		4.04	4.02		5	
21/1/2015	17:15	Fine	Middle	3.0	17.40	17.40	17.70	8.04	8.04	8.04	31.16	31.16	31.16	87.2	88.0	87.4	6.93	6.99	6.94	4.08	4.10	4.13	10	9.00
	17:18		Middle	3.0	18.00	18.00		8.03	8.03		31.16	31.16		87.3	87.2		6.93	6.92		4.17	4.17		8	
23/1/2015	8:57	Fine	Middle	4.0	16.20	16.20	16.20	8.06	8.06	8.06	31.19	31.19	31.19	80.4	80.5	80.4	6.54	6.55	6.53	5.61	5.58	5.58	9	8.50
	8:59		Middle	3.0	16.20	16.20		8.06	8.06		31.19	31.19		80.3	80.2		6.52	6.52		5.57	5.56		8	
26/1/2015	10:53	Fine	Middle	2.5	17.50	17.60	17.73	8.35	8.33	8.27	31.26	31.21	31.21	77.3	78.6	78.5	6.08	6.19	6.18	5.66	5.57	5.58	7	7.00
	10:55		Middle	2.5	17.90	17.90		8.19	8.19		31.18	31.18		79.6	78.3		6.27	6.16		5.48	5.61		7	

Remarks:
Single underline denotes exceedance over Action Level.
Double underline denotes exceedance over Limit Level.



**Water Monitoring Result at P1 - HKCEC Phase I
Mid-Flood Tide**

Date	Time	Weather Condition	Sampling Depth		Water Temperature			pH			Salinity			DO Saturation		DO		Turbidity		Suspended Solids				
					°C		-		ppt		%		mg/L		NTU		mg/L							
			m	Value	Average	Value	Average	Value	Average	Value	Average	Value	Average	Value	Average	Value	Average	Value	Average					
29/12/2014	14:30	Fine	Middle	3.0	18.00	18.00	18.00	8.08	8.08	8.10	32.13	32.13	32.14	70.0	69.2	68.5	5.45	5.40	5.34	1.22	1.22	1.21	2	2.00
	14:32		Middle	3.0	18.00	18.00		8.12	8.12		32.14	32.14		67.6	67.1		5.27	5.23		1.21	1.19		2	
31/12/2014	14:10	Fine	Middle	2.5	18.50	18.50	18.65	8.07	8.07	8.07	31.64	31.64	31.62	77.1	77.1	77.1	5.97	5.98	5.97	2.99	2.95	2.96	4	3.50
	14:12		Middle	2.5	18.80	18.80		8.06	8.06		31.60	31.60		76.8	77.4		5.93	5.99		2.94	2.96		3	
3/1/2015	16:15	Fine	Middle	3.0	18.10	18.10	18.15	8.17	8.17	8.17	31.59	31.59	31.59	83.4	83.6	83.3	6.53	6.53	6.51	2.40	2.00	2.10	4	4.50
	16:17		Middle	3.0	18.20	18.20		8.17	8.17		31.59	31.59		82.9	83.2		6.47	6.50		2.01	1.97		5	
6/1/2015	8:36	Fine	Middle	3.0	18.30	18.30	18.35	8.15	8.15	8.15	31.50	31.50	31.54	78.8	77.2	76.7	6.13	6.01	5.97	4.49	4.51	4.36	5	4.50
	8:38		Middle	3.0	18.40	18.40		8.14	8.14		31.57	31.57		76.0	74.9		5.91	5.83		4.28	4.14		4	
8/1/2015	9:56	Fine	Middle	2.5	17.60	17.60	17.55	7.43	7.43	7.46	31.98	31.98	31.99	71.9	72.1	72.0	5.66	5.69	5.68	1.27	1.25	1.25	4	4.00
	9:58		Middle	2.5	17.50	17.50		7.49	7.49		31.99	31.99		72.3	71.7		5.70	5.66		1.24	1.22		4	
10/1/2015	11:10	Fine	Middle	3.0	17.70	17.70	17.65	7.68	7.68	7.69	31.93	31.93	31.93	66.2	65.7	65.9	5.21	5.18	5.19	1.38	1.37	1.37	<2	<2
	11:12		Middle	3.0	17.60	17.60		7.70	7.70		31.93	31.93		65.5	66.1		5.15	5.21		1.37	1.36		<2	
12/1/2015	11:41	Fine	Middle	3.0	17.50	17.50	17.50	7.70	7.70	7.72	31.72	31.72	31.75	65.4	64.4	64.2	5.17	5.09	5.08	1.86	1.86	1.86	4	3.50
	11:43		Middle	3.0	17.50	17.50		7.74	7.74		31.77	31.77		63.9	63.2		5.05	4.99		1.86	1.87		3	
14/1/2015	13:52	Fine	Middle	2.5	18.00	18.00	18.10	7.86	7.86	7.86	31.72	31.72	31.67	72.2	73.6	74.4	5.65	5.75	5.82	3.02	3.01	3.00	4	4.00
	13:54		Middle	2.5	18.20	18.20		7.86	7.86		31.61	31.61		75.8	76.1		5.92	5.94		2.98	2.97		4	
16/1/2015	14:54	Fine	Middle	3.0	17.60	17.60	17.60	7.93	7.93	7.95	31.76	31.76	31.77	79.0	76.4	76.0	6.23	6.03	6.00	1.04	1.07	1.06	2	2.00
	14:56		Middle	3.0	17.60	17.60		7.97	7.97		31.77	31.77		74.9	73.8		5.91	5.81		1.06	1.08		2	
19/1/2015	15:10	Fine	Middle	3.0	17.50	17.50	17.55	8.02	8.02	8.02	31.09	31.09	31.08	81.7	82.8	82.2	6.47	6.55	6.51	2.88	2.82	2.84	7	6.50
	15:12		Middle	3.0	17.60	17.60		8.01	8.01		31.07	31.07		82.2	82.0		6.51	6.49		2.84	2.81		6	
21/1/2015	17:20	Fine	Middle	3.0	17.20	17.20	17.25	8.01	8.01	8.01	31.21	31.21	31.21	81.7	82.2	82.1	6.51	6.55	6.54	3.41	3.45	3.45	6	7.00
	17:22		Middle	3.0	17.30	17.30		8.01	8.01		31.20	31.20		82.1	82.3		6.54	6.55		3.47	3.46		8	
23/1/2015	9:20	Fine	Middle	3.0	16.50	16.50	16.50	8.02	8.02	8.02	31.18	31.18	31.19	80.5	80.6	80.6	6.51	6.52	6.51	5.06	5.00	5.01	11	12.00
	9:21		Middle	3.0	16.50	16.50		8.02	8.02		31.19	31.19		80.9	80.2		6.54	6.48		4.98	4.99		13	
26/1/2015	11:20	Fine	Middle	2.5	17.50	17.50	17.50	8.11	8.11	8.11	31.33	31.33	31.30	74.4	73.7	73.4	5.90	5.84	5.82	3.07	3.03	3.03	8	7.50
	11:22		Middle	2.5	17.50	17.50		8.10	8.10		31.27	31.27		73.0	72.5		5.78	5.74		3.01	3.00		7	

Remarks:
Single underline denotes exceedance over Action Level.
Double underline denotes exceedance over Limit Level.



**Water Monitoring Result at P3 - APA
Mid-Flood Tide**

Date	Time	Weather Condition	Sampling Depth		Water Temperature			pH			Salinity		DO Saturation		DO		Turbidity			Suspended Solids				
					°C			-			ppt		%		mg/L		NTU			mg/L				
			m	Value	Average	Value	Average	Value	Average	Value	Average	Value	Average	Value	Average	Value	Average	Value	Average	Value	Average			
29/12/2014	14:21	Fine	Middle	3.0	17.70	17.70	17.70	8.09	8.09	8.11	32.07	32.07	32.12	66.7	68.2	67.8	5.23	5.35	5.32	1.21	1.16	1.15	2	2.00
	14:23		Middle	3.0	17.70	17.70		8.12	8.12		32.16	32.16		68.0	68.1		67.8	5.34		5.34	1.11		1.11	
31/12/2014	14:03	Fine	Middle	2.5	18.20	18.20	18.30	8.09	8.09	8.08	31.57	31.57	31.51	76.9	76.5	77.0	6.00	5.97	6.00	3.35	3.40	3.40	4	3.50
	14:05		Middle	2.5	18.40	18.40		8.07	8.07		31.45	31.45		77.3	77.4		77.0	6.02		6.02	3.41		3.44	
3/1/2015	16:32	Fine	Middle	3.0	17.90	17.90	17.90	8.20	8.20	8.20	31.56	31.56	31.56	78.1	77.6	77.1	6.13	6.08	6.05	2.37	2.34	2.35	2	2.50
	16:34		Middle	3.0	17.90	17.90		8.20	8.20		31.55	31.55		76.6	76.2		77.1	6.01		5.98	6.05		2.34	
6/1/2015	8:39	Fine	Middle	3.0	18.30	18.30	18.30	8.14	8.14	8.14	31.60	31.60	31.60	81.8	81.6	81.4	6.37	6.35	6.34	3.27	3.18	3.24	3	3.50
	8:41		Middle	3.0	18.30	18.30		8.13	8.13		31.60	31.60		80.9	81.2		81.4	6.30		6.32	6.34		3.23	
8/1/2015	9:51	Fine	Middle	2.5	17.70	17.70	17.55	7.41	7.41	7.43	32.03	32.03	32.04	68.7	69.5	68.8	5.42	5.48	5.43	1.12	1.10	1.10	2	2.50
	9:53		Middle	2.5	17.40	17.40		7.45	7.45		32.04	32.04		68.6	68.4		68.8	5.41		5.40	5.43		1.09	
10/1/2015	11:00	Fine	Middle	3.0	17.40	17.40	17.35	7.60	7.60	7.63	31.75	31.75	31.82	61.0	60.6	60.5	4.83	4.80	4.79	1.35	1.34	1.36	2	2.50
	11:02		Middle	3.0	17.30	17.30		7.66	7.66		31.88	31.88		60.4	60.1		60.5	4.77		4.75	4.79		1.36	
12/1/2015	11:34	Fine	Middle	3.0	17.60	17.60	17.55	7.69	7.69	7.70	31.83	31.83	31.84	63.7	62.8	62.2	5.03	4.96	4.91	1.96	1.91	1.89	2	2.00
	11:36		Middle	3.0	17.50	17.50		7.71	7.71		31.84	31.84		61.3	60.8		62.2	4.84		4.80	4.91		1.84	
14/1/2015	13:56	Fine	Middle	2.5	17.70	17.70	17.80	7.87	7.87	7.87	31.70	31.70	31.69	76.4	76.6	77.1	6.00	6.02	6.06	3.57	3.43	3.47	<2	<2
	13:58		Middle	2.5	17.90	17.90		7.87	7.87		31.68	31.68		77.4	78.1		77.1	6.08		6.13	6.06		3.43	
16/1/2015	14:42	Fine	Middle	3.0	17.30	17.30	17.35	7.97	7.97	7.98	31.73	31.73	31.75	62.9	62.5	62.3	4.99	4.95	4.94	1.34	1.39	1.36	2	2.00
	14:44		Middle	3.0	17.40	17.40		7.98	7.98		31.77	31.77		62.0	61.8		62.3	4.91		4.91	4.94		1.37	
19/1/2015	15:16	Fine	Middle	3.0	17.70	17.70	17.70	8.02	8.02	8.02	31.05	31.05	31.05	82.1	82.2	81.9	6.49	6.50	6.47	3.34	3.32	3.32	5	4.50
	15:18		Middle	3.0	17.70	17.70		8.02	8.02		31.05	31.05		82.0	81.2		81.9	6.48		6.42	6.47		3.30	
21/1/2015	17:25	Fine	Middle	3.0	17.20	17.20	17.25	8.02	8.02	8.02	31.15	31.15	31.16	83.5	84.5	84.3	6.66	6.73	6.72	3.86	3.76	3.73	13	12.50
	17:27		Middle	3.0	17.30	17.30		8.02	8.02		31.16	31.16		84.8	84.5		84.3	6.76		6.74	6.72		3.64	
23/1/2015	9:15	Fine	Middle	3.0	16.30	16.30	16.30	8.02	8.02	8.02	31.17	31.17	31.18	81.4	80.9	80.8	6.61	6.57	6.56	3.62	3.56	3.53	10	10.00
	9:17		Middle	3.0	16.30	16.30		8.02	8.02		31.18	31.18		80.6	80.1		80.8	6.56		6.51	6.56		3.51	
26/1/2015	11:12	Fine	Middle	2.5	17.30	17.30	17.35	8.11	8.11	8.11	31.22	31.22	31.22	75.2	75.0	75.1	5.97	5.97	5.96	3.65	3.52	3.67	5	5.00
	11:14		Middle	2.5	17.40	17.40		8.10	8.10		31.21	31.21		75.3	74.7		75.1	5.98		5.93	5.96		3.69	

Remarks:
Single underline denotes exceedance over Action Level.
Double underline denotes exceedance over Limit Level.



**Water Monitoring Result at P4 - SOC
Mid-Flood Tide**

Date	Time	Weather Condition	Sampling Depth		Water Temperature		pH		Salinity		DO Saturation		DO		Turbidity		Suspended Solids							
					°C		-		ppt		%		mg/L		NTU		mg/L							
			m	Value	Average	Value	Average	Value	Average	Value	Average	Value	Average	Value	Average	Value	Average	Value	Average					
29/12/2014	14:07	Fine	Middle	3.0	17.40	17.40	17.35	7.78	7.78	7.79	31.90	31.90	31.99	69.3	69.0	68.9	5.48	5.46	5.45	1.34	1.34	1.35	2	2.00
	14:09		Middle	3.0	17.30	17.30		7.80	7.80		32.07	32.07		68.7	68.4		68.9	5.44		5.41	1.38		1.34	
31/12/2014	13:53	Fine	Middle	2.5	18.20	18.20	18.25	8.08	8.08	8.08	31.56	31.56	31.55	76.3	76.8	76.3	5.95	5.99	5.95	3.27	3.17	3.14	3	3.00
	13:55		Middle	2.5	18.30	18.30		8.07	8.07		31.54	31.54		76.2	76.0		76.3	5.94		5.93	3.06		3.05	
3/1/2015	16:27	Fine	Middle	3.0	17.30	17.30	17.30	8.21	8.21	8.21	31.38	31.38	31.38	83.5	82.9	82.6	6.65	6.59	6.57	2.51	2.54	2.49	3	3.00
	16:29		Middle	3.0	17.30	17.30		8.21	8.21		31.38	31.38		82.4	81.5		82.6	6.55		6.47	2.56		2.36	
6/1/2015	8:42	Fine	Middle	3.0	18.30	18.30	18.35	8.16	8.16	8.17	31.59	31.59	31.59	87.0	86.5	86.4	6.77	6.73	6.72	3.92	3.97	3.88	3	3.00
	8:44		Middle	3.0	18.40	18.40		8.18	8.18		31.58	31.58		86.2	85.7		86.4	6.71		6.67	3.82		3.81	
8/1/2015	9:46	Fine	Middle	2.5	17.70	17.70	17.60	7.38	7.38	7.41	32.02	32.02	32.03	74.9	74.7	74.6	5.89	5.88	5.87	1.69	1.68	1.68	3	3.00
	9:48		Middle	2.5	17.50	17.50		7.43	7.43		32.04	32.04		74.6	74.2		74.6	5.87		5.84	1.67		1.67	
10/1/2015	10:50	Fine	Middle	3.0	17.50	17.50	17.50	7.45	7.45	7.53	31.82	31.82	31.85	62.0	62.2	62.3	4.90	4.91	4.92	2.32	2.26	2.26	4	3.50
	10:52		Middle	3.0	17.50	17.50		7.61	7.61		31.87	31.87		62.6	62.5		62.3	4.94		4.93	2.24		2.21	
12/1/2015	11:27	Fine	Middle	3.0	17.40	17.40	17.45	7.68	7.68	7.69	31.84	31.84	31.84	62.7	61.6	61.9	4.96	4.87	4.90	1.86	1.83	1.82	4	3.00
	11:29		Middle	3.0	17.50	17.50		7.69	7.69		31.84	31.84		61.5	61.9		61.9	4.86		4.89	1.81		1.77	
14/1/2015	14:02	Fine	Middle	2.5	17.60	17.60	17.65	7.88	7.88	7.88	31.67	31.67	31.67	75.6	75.6	76.7	5.95	5.96	6.04	2.93	2.70	2.72	3	3.50
	14:04		Middle	2.5	17.70	17.70		7.88	7.88		31.66	31.66		77.6	78.0		76.7	6.12		6.14	2.69		2.77	
16/1/2015	14:34	Fine	Middle	3.0	17.10	17.10	17.10	7.92	7.92	7.94	31.75	31.75	31.78	63.9	63.2	63.2	5.08	5.03	5.03	1.04	1.05	1.06	3	2.50
	14:36		Middle	3.0	17.10	17.10		7.96	7.96		31.80	31.80		63.0	62.6		63.2	5.01		4.98	1.08		1.05	
19/1/2015	15:21	Fine	Middle	3.0	17.30	17.30	17.35	8.04	8.04	8.04	31.03	31.03	31.03	84.2	84.6	83.8	6.70	6.73	6.67	4.23	4.10	4.11	5	5.00
	15:23		Middle	3.0	17.40	17.40		8.04	8.04		31.02	31.02		83.6	82.9		83.8	6.65		6.59	4.09		4.00	
21/1/2015	17:35	Fine	Middle	3.0	17.10	17.10	17.10	8.03	8.03	8.03	31.15	31.15	31.15	90.2	90.6	90.4	7.21	7.26	7.23	4.10	4.19	4.15	12	12.50
	17:38		Middle	3.0	17.10	17.10		8.03	8.03		31.15	31.15		90.7	89.9		90.4	7.27		7.18	4.21		4.11	
23/1/2015	9:10	Fine	Middle	3.0	16.00	16.00	16.00	8.05	8.05	8.05	31.17	31.17	31.17	84.7	84.8	84.9	6.91	6.92	6.93	5.70	5.66	5.64	8	8.50
	9:12		Middle	3.0	16.00	16.00		8.05	8.05		31.17	31.17		85.2	84.7		84.9	6.96		6.91	5.61		5.59	
26/1/2015	11:05	Fine	Middle	2.5	17.60	17.60	17.65	8.15	8.15	8.14	31.32	31.32	31.29	76.0	76.2	76.1	6.00	6.01	6.01	5.11	4.94	4.96	7	7.50
	11:07		Middle	2.5	17.70	17.70		8.13	8.13		31.26	31.26		76.1	76.1		76.1	6.01		6.01	4.88		4.90	

Remarks:
Single underline denotes exceedance over Action Level.
Double underline denotes exceedance over Limit Level.



**Water Monitoring Result at P5 - WCT / RT / IT
Mid-Flood Tide**

Date	Time	Weather Condition	Sampling Depth		Water Temperature		pH			Salinity		DO Saturation		DO		Turbidity		Suspended Solids						
					°C		-		ppt		%		mg/L		NTU		mg/L							
			m	Value	Average	Value	Average	Value	Average	Value	Average	Value	Average	Value	Average	Value	Average	Value	Average					
29/12/2014	14:12	Fine	Middle	3.0	17.50	17.50	17.35	8.09	8.09	8.11	31.84	31.84	31.99	73.3	72.2	71.8	5.81	5.72	5.70	1.44	1.44	1.44	5	4.00
	14:14		Middle	3.0	17.20	17.20		8.13	8.13		32.13	32.13		71.6	70.1		5.68	5.58		1.44	1.44		3	
31/12/2014	13:58	Fine	Middle	2.5	18.10	18.10	18.10	8.11	8.11	8.11	31.51	31.51	31.51	75.3	76.3	76.1	5.90	5.98	5.96	3.29	3.35	3.38	3	3.00
	14:00		Middle	2.5	18.10	18.10		8.11	8.11		31.50	31.50		76.5	76.3		5.99	5.97		3.41	3.45		3	
3/1/2015	16:23	Fine	Middle	3.0	17.30	17.30	17.35	8.21	8.21	8.21	31.55	31.55	31.54	79.6	79.0	78.5	6.32	6.28	6.23	2.76	2.72	2.72	3	3.50
	16:25		Middle	3.0	17.40	17.40		8.21	8.21		31.53	31.53		78.2	77.1		6.21	6.12		2.70	2.69		4	
6/1/2015	8:45	Fine	Middle	3.0	18.40	18.40	18.40	8.18	8.18	8.18	31.59	31.59	31.59	78.9	78.1	77.7	6.14	6.10	6.05	3.17	3.05	3.05	4	4.50
	8:47		Middle	3.0	18.40	18.40		8.18	8.18		31.58	31.58		76.9	76.8		5.98	5.98		3.00	2.97		5	
8/1/2015	9:40	Fine	Middle	2.5	18.00	18.00	17.95	7.37	7.37	7.39	31.58	31.58	31.82	76.4	74.9	75.0	5.96	5.87	5.87	1.86	1.86	1.86	5	5.50
	9:42		Middle	2.5	17.90	17.90		7.41	7.41		32.05	32.05		74.5	74.2		5.83	5.81		1.86	1.87		6	
10/1/2015	10:42	Fine	Middle	3.0	17.70	17.70	17.70	7.57	7.57	7.60	31.98	31.98	31.98	65.4	65.2	65.3	5.14	5.12	5.13	2.45	2.46	2.46	4	4.00
	10:44		Middle	3.0	17.70	17.70		7.62	7.62		31.97	31.97		65.1	65.6		5.12	5.15		2.46	2.47		4	
12/1/2015	11:24	Fine	Middle	3.0	17.50	17.50	17.50	7.60	7.60	7.63	31.84	31.84	31.86	65.6	65.4	65.5	5.18	5.17	5.17	2.87	2.89	2.90	5	4.50
	11:26		Middle	3.0	17.50	17.50		7.65	7.65		31.87	31.87		65.3	65.5		5.16	5.18		2.92	2.92		4	
14/1/2015	14:07	Fine	Middle	2.5	17.70	17.70	17.75	7.88	7.88	7.89	31.68	31.68	31.68	77.3	77.8	77.9	6.08	6.12	6.13	3.82	3.73	3.71	2	3.00
	14:09		Middle	2.5	17.80	17.80		7.89	7.89		31.67	31.67		78.5	78.0		6.18	6.14		3.66	3.63		4	
16/1/2015	14:24	Fine	Middle	3.0	17.30	17.30	17.30	7.94	7.94	7.95	31.77	31.77	31.67	68.0	67.7	67.9	5.39	5.37	5.39	1.14	1.17	1.16	6	5.50
	14:26		Middle	3.0	17.30	17.30		7.95	7.95		31.78	31.38		67.9	68.1		5.38	5.40		1.16	1.15		5	
19/1/2015	15:28	Fine	Middle	3.0	17.40	17.40	17.50	8.05	8.05	8.05	30.98	30.98	30.99	81.1	82.1	80.7	6.44	6.51	6.41	4.91	4.91	4.85	6	6.00
	15:30		Middle	3.0	17.60	17.60		8.05	8.05		30.99	30.99		80.7	79.0		6.40	6.27		4.84	4.75		6	
21/1/2015	17:42	Fine	Middle	3.0	17.10	17.10	17.10	8.05	8.05	8.05	31.14	31.14	31.14	83.8	83.7	83.5	6.70	6.69	6.68	4.16	4.10	4.16	8	9.00
	17:44		Middle	3.0	17.10	17.10		8.05	8.05		31.14	31.14		83.1	83.5		6.64	6.68		4.15	4.22		10	
23/1/2015	9:05	Fine	Middle	3.0	16.10	16.10	16.10	8.07	8.07	8.07	31.19	31.19	31.19	79.9	80.1	80.2	6.50	6.52	6.53	5.92	5.92	5.92	13	13.00
	9:07		Middle	3.0	16.10	16.10		8.07	8.07		31.19	31.19		80.1	80.6		6.52	6.57		5.92	5.93		13	
26/1/2015	10:58	Fine	Middle	2.5	17.60	17.40	17.55	8.17	8.17	8.17	31.24	31.24	31.23	79.3	78.7	79.0	6.28	6.24	6.25	5.80	5.77	5.78	9	8.50
	11:00		Middle	2.5	17.60	17.60		8.16	8.16		31.22	31.22		79.0	78.8		6.26	6.23		5.76	5.79		8	

Remarks:
Single underline denotes exceedance over Action Level.
Double underline denotes exceedance over Limit Level.



**Water Monitoring Result at RW21-P789 - Sun Hung Kai Centre
Mid-Flood Tide**

Date	Time	Weather Condition	Sampling Depth		Water Temperature		pH			Salinity		DO Saturation		DO		Turbidity		Suspended Solids						
					°C		-		ppt		%		mg/L		NTU		mg/L							
			m	Value	Average	Value	Average	Value	Average	Value	Average	Value	Average	Value	Average	Value	Average	Value	Average					
29/12/2014	9:25	Fine	Middle	3.0	16.50	16.50	16.40	8.18	8.18	8.19	31.93	31.93	31.95	79.3	80.3	80.5	6.40	6.48	6.50	2.13	2.16	2.16	3	2.50
	9:27		Middle	3.0	16.30	16.30		8.19	8.19		31.96	31.96		81.5	81.0		80.5	6.58		6.54	6.50		2.17	
31/12/2014	14:27	Fine	Middle	3.0	18.80	18.80	18.80	8.11	8.11	8.12	31.63	31.63	31.60	86.4	84.7	84.8	6.64	6.51	6.52	2.42	2.45	2.47	3	3.00
	14:29		Middle	3.0	18.80	18.80		8.12	8.12		31.57	31.57		84.3	83.8		84.8	6.48		6.44	6.52		2.51	
3/1/2015	16:58	Fine	Middle	3.0	17.70	17.70	17.70	8.21	8.21	8.22	31.59	31.59	31.59	84.9	84.7	84.5	6.70	6.68	6.67	2.69	2.72	2.73	3	3.50
	17:00		Middle	3.0	17.70	17.70		8.22	8.22		31.59	31.59		84.3	84.1		84.5	6.65		6.64	6.67		2.74	
6/1/2015	8:53	Fine	Middle	3.0	18.30	18.30	18.35	8.17	8.17	8.15	31.63	31.63	31.61	81.5	81.1	80.8	6.35	6.32	6.29	3.42	3.42	3.42	2	2.50
	8:55		Middle	3.0	18.40	18.40		8.13	8.13		31.59	31.59		80.4	80.0		80.8	6.26		6.22	6.29		3.42	
8/1/2015	8:05	Fine	Middle	3.0	17.10	17.10	17.05	8.15	8.15	8.15	31.45	31.45	31.47	75.7	76.3	76.2	6.04	6.09	6.09	5.03	5.02	5.02	5	4.50
	8:07		Middle	3.0	17.00	17.00		8.15	8.15		31.48	31.48		76.4	76.4		76.2	6.10		6.11	6.09		5.02	
10/1/2015	7:20	Fine	Middle	3.0	16.70	16.70	16.55	8.19	8.19	8.18	31.12	31.12	31.14	78.7	78.7	78.1	6.35	6.35	6.31	4.37	4.30	4.22	<2	<u><2</u>
	7:22		Middle	3.0	16.40	16.40		8.17	8.17		31.15	31.15		77.6	77.4		78.1	6.27		6.25	6.31		4.13	
12/1/2015	9:50	Fine	Middle	3.0	17.30	17.30	17.30	8.11	8.11	8.11	31.69	31.69	31.70	78.5	77.9	78.0	6.22	6.18	6.19	3.91	3.91	3.92	3	3.50
	9:52		Middle	3.0	17.30	17.30		8.10	8.10		31.70	31.70		77.8	77.9		78.0	6.18		6.18	6.19		3.92	
14/1/2015	14:15	Fine	Middle	3.0	17.70	17.70	17.75	7.92	7.92	7.92	32.50	32.50	32.59	71.0	71.3	72.1	5.59	5.61	5.67	4.01	4.01	4.04	3	3.50
	14:17		Middle	3.0	17.80	17.80		7.92	7.92		32.67	32.67		72.8	73.1		72.1	5.72		5.75	5.67		4.02	
16/1/2015	14:20	Fine	Middle	3.5	18.00	18.00	18.10	8.12	8.12	8.13	31.18	31.18	31.17	97.7	96.4	96.2	7.66	7.55	7.54	2.57	2.58	2.59	3	3.00
	14:22		Middle	3.5	18.20	18.20		8.13	8.13		31.16	31.16		96.1	94.7		96.2	7.54		7.41	7.54		2.59	
19/1/2015	15:50	Fine	Middle	2.5	17.80	17.80	17.95	8.05	8.05	8.05	31.05	31.05	31.05	82.2	84.1	83.5	6.47	6.61	6.57	3.19	3.18	3.18	5	5.00
	15:52		Middle	2.5	18.10	18.10		8.05	8.05		31.05	31.05		83.7	84.0		83.5	6.58		6.60	6.57		3.18	
21/1/2015	18:00	Fine	Middle	3.5	17.40	17.40	17.45	8.05	8.05	8.06	31.18	31.18	31.17	83.4	83.6	83.3	6.62	6.63	6.61	6.34	6.53	6.42	9	9.00
	18:02		Middle	3.5	17.50	17.50		8.06	8.06		31.15	31.15		83.2	83.0		83.3	6.61		6.59	6.61		6.53	
23/1/2015	9:35	Fine	Middle	4.0	16.60	16.60	16.60	8.05	8.05	8.06	31.23	31.23	31.24	80.6	82.0	81.2	6.50	6.61	6.55	6.41	6.34	6.28	9	9.50
	9:37		Middle	4.0	16.60	16.60		8.06	8.06		31.24	31.24		81.1	81.1		81.2	6.54		6.54	6.55		6.20	
26/1/2015	10:05	Fine	Middle	3.5	17.70	17.70	17.75	8.03	8.03	8.03	31.20	31.20	31.21	83.4	83.2	82.6	6.57	6.56	6.44	6.15	6.13	6.11	7	7.50
	10:07		Middle	3.5	17.80	17.80		8.03	8.03		31.22	31.22		82.2	81.4		82.6	6.48		6.14	6.44		6.08	

Remarks:
Single underline denotes exceedance over Action Level.
Double underline denotes exceedance over Limit Level.



**Water Monitoring Result at WSD19 - Sheung Wan
Mid-Flood Tide**

Date	Time	Weather Condition	Sampling Depth		Water Temperature		pH			Salinity		DO Saturation		DO		Turbidity		Suspended Solids						
					°C		-		ppt		%		mg/L		NTU		mg/L							
			m	Value	Average	Value	Average	Value	Average	Value	Average	Value	Average	Value	Average	Value	Average	Value	Average					
29/12/2014	13:40	Fine	Middle	3.5	17.90	17.90	17.90	8.21	8.21	8.41	31.62	31.62	31.62	81.5	80.9	81.2	6.40	6.35	6.38	3.72	3.76	3.73	4	3.50
	13:42		Middle	3.5	17.90	17.90		8.61	8.61		31.61	31.61		81.6	80.8		6.41	6.35		3.76	3.67		3	
31/12/2014	11:20	Fine	Middle	3.0	17.50	17.50	17.45	8.14	8.14	8.16	31.57	31.57	31.63	78.4	78.4	78.2	6.21	6.21	6.21	5.77	5.67	5.70	3	3.50
	11:22		Middle	3.0	17.40	17.40		8.17	8.17		31.69	31.69		78.0	78.0		6.23	6.18		5.71	5.64		4	
3/1/2015	15:39	Fine	Middle	3.0	18.30	18.30	18.30	8.17	8.17	8.17	31.70	31.70	31.68	74.5	74.3	74.5	5.80	5.78	5.80	3.63	3.64	3.64	4	4.00
	15:41		Middle	3.0	18.30	18.30		8.16	8.16		31.65	31.65		74.5	74.7		5.80	5.81		3.65	3.64		4	
6/1/2015	7:37	Fine	Middle	3.0	18.40	18.40	18.45	8.27	8.27	8.26	31.75	31.75	31.74	80.8	80.0	79.1	6.27	6.21	6.14	1.71	1.71	1.71	4	5.00
	7:39		Middle	3.0	18.50	18.50		8.24	8.24		31.73	31.72		78.4	77.3		6.08	6.00		1.71	1.71		6	
8/1/2015	9:10	Fine	Middle	3.0	17.20	17.20	17.20	8.15	8.15	8.16	31.43	31.43	31.44	81.2	83.0	82.8	6.47	6.61	6.60	8.01	8.00	7.97	2	2.00
	9:12		Middle	3.0	17.20	17.20		8.16	8.16		31.45	31.45		83.6	83.3		6.66	6.64		7.89	7.99		<2	
10/1/2015	11:53	Fine	Middle	3.5	18.10	18.10	18.10	8.14	8.14	8.14	31.39	31.39	31.39	79.4	80.1	80.0	6.22	6.27	6.26	5.02	5.02	5.02	<2	<2
	11:55		Middle	3.5	18.10	18.10		8.14	8.14		31.39	31.39		80.4	79.9		6.30	6.26		5.02	5.03		<2	
12/1/2015	10:50	Fine	Middle	3.0	17.20	17.20	17.20	8.10	8.10	8.11	31.41	31.41	31.41	76.4	77.3	76.8	6.09	6.16	6.12	3.79	3.79	3.79	4	5.00
	10:52		Middle	3.0	17.20	17.20		8.11	8.11		31.41	31.41		76.9	76.5		6.13	6.10		3.79	3.78		6	
14/1/2015	10:35	Fine	Middle	3.0	17.10	17.10	17.10	7.63	7.63	7.64	31.57	31.57	31.57	75.8	75.1	75.3	6.05	6.00	6.01	4.63	4.63	4.62	5	4.50
	10:37		Middle	3.0	17.10	17.10		7.64	7.64		31.57	31.57		74.9	75.2		5.98	6.01		4.62	4.61		4	
16/1/2015	13:30	Fine	Middle	3.0	18.40	18.40	18.50	8.00	8.00	8.02	31.19	31.19	31.20	82.4	82.7	82.7	6.42	6.43	6.43	3.97	3.98	4.02	7	7.50
	13:32		Middle	3.0	18.60	18.60		8.03	8.03		31.20	31.20		82.8	82.7		6.44	6.43		4.02	4.10		8	
19/1/2015	14:40	Fine	Middle	3.0	18.50	18.50	18.70	7.98	7.98	7.98	31.06	31.06	31.05	82.3	80.7	81.1	6.37	6.26	6.28	3.39	3.39	3.43	6	6.00
	14:42		Middle	3.0	18.90	18.90		7.97	7.97		31.03	31.03		80.2	81.2		6.21	6.28		3.45	3.47		6	
21/1/2015	16:50	Fine	Middle	3.5	18.60	18.60	18.65	8.03	8.03	8.03	31.22	31.22	31.22	81.9	81.6	81.3	6.36	6.35	6.31	7.59	7.74	7.73	12	12.00
	16:52		Middle	3.5	18.70	18.70		8.03	8.03		31.22	31.22		81.4	80.4		6.31	6.23		7.82	7.75		12	
23/1/2015	8:00	Fine	Middle	3.5	16.20	16.20	16.15	8.04	8.04	8.05	31.23	31.23	31.23	73.5	72.7	72.6	5.98	5.91	5.90	16.61	16.48	<u>16.48</u>	8	8.00
	8:02		Middle	3.5	16.10	16.10		8.05	8.05		31.23	31.23		71.9	72.2		5.84	5.88		16.40	16.44		8	
26/1/2015	11:10	Fine	Middle	3.5	18.10	18.10	18.10	8.00	8.00	8.00	31.25	31.25	31.24	80.0	80.5	80.2	6.26	6.29	6.27	7.58	7.63	7.61	10	10.00
	11:12		Middle	3.5	18.10	18.10		8.00	8.00		31.23	31.23		80.0	80.2		6.26	6.27		7.62	7.60		10	

Remarks:
Single underline denotes exceedance over Action Level.
Double underline denotes exceedance over Limit Level.



**Water Monitoring Result at C7 - Windsor House
Mid-Ebb Tide**

Date	Time	Weather Condition	Sampling Depth		Water Temperature		pH			Salinity		DO Saturation		DO		Turbidity		Suspended Solids						
					°C		-			ppt		%		mg/L		NTU		mg/L						
					Value	Average	Value	Average	Value	Average	Value	Average	Value	Average	Value	Average	Value	Average	Value	Average				
29/12/2014	3:10	Cloudy	Middle	-	15.30	15.30	15.25	7.80	7.80	7.81	31.32	31.32	31.36	89.8	89.6	89.7	7.43	7.43	7.43	2.10	2.08	2.11	2	2.00
	3:11		Middle	-	15.20	15.20		7.81	7.81		31.39	31.39		89.5	89.9		7.42	7.44		2.12	2.15		2	
31/12/2014	20:02	Cloudy	Middle	-	18.00	18.00	18.00	8.11	8.11	8.12	31.25	31.25	31.27	76.0	76.4	76.4	5.97	6.00	6.00	2.76	2.71	2.69	3	3.00
	20:04		Middle	-	18.00	18.00		8.13	8.13		31.29	31.29		76.9	76.4		6.04	6.00		2.65	2.62		3	
3/1/2015	22:52	Cloudy	Middle	-	17.20	17.20	17.20	7.83	7.83	7.83	31.30	31.30	31.30	90.3	90.4	90.7	7.19	7.21	7.22	2.07	2.04	2.02	2	2.00
	22:53		Middle	-	17.20	17.20		7.83	7.83		31.30	31.30		90.9	91.0		7.24	7.25		2.02	1.96		<2	
6/1/2015	0:03	Cloudy	Middle	-	18.80	18.80	18.80	7.72	7.72	7.73	31.34	31.35	31.35	92.1	92.3	92.2	7.12	7.13	7.12	1.29	1.32	1.34	2	2.00
	0:04		Middle	-	18.80	18.80		7.73	7.73		31.35	31.35		92.5	91.8		7.15	7.09		1.38	1.36		2	
8/1/2015	-	-	Middle	-	-	-	-	-	-	-	-	-	-	-	-	-	-	-	-	-	-	-	-	-
	-		Middle	-	-	-		-	-		-	-		-	-		-	-		-	-		-	
10/1/2015	0:11	Cloudy	Middle	-	16.90	16.90	16.90	7.88	7.88	7.88	31.28	31.28	31.27	87.4	87.2	87.7	7.05	6.99	7.05	3.28	3.36	3.35	<2	<2
	0:12		Middle	-	16.90	16.90		7.88	7.88		31.22	31.28		88.3	88.0		7.08	7.06		3.37	3.40		<2	
12/1/2015	2:02	Cloudy	Middle	-	17.30	17.30	17.30	7.83	7.83	7.84	31.16	31.16	31.17	87.8	89.3	89.5	6.99	7.11	7.13	3.06	2.83	2.79	<2	3.00
	2:03		Middle	-	17.30	17.30		7.84	7.84		31.17	31.17		89.9	90.9		7.16	7.24		2.59	2.66		3	
14/1/2015	20:25	Fine	Middle	-	15.80	15.80	15.80	7.95	7.95	7.96	30.18	30.18	30.48	84.7	84.5	84.3	6.96	6.95	6.93	3.57	3.53	3.52	<2	<2
	20:26		Middle	-	15.80	15.80		7.96	7.96		30.77	30.77		84.4	83.7		6.94	6.88		3.50	3.48		<2	
16/1/2015	20:32	Cloudy	Middle	-	17.60	17.60	17.55	7.79	7.79	7.79	30.34	30.34	30.67	89.4	91.4	90.8	7.14	7.25	7.22	3.75	3.55	3.64	<2	2.00
	20:33		Middle	-	17.50	17.50		7.79	7.79		30.99	30.99		91.0	91.3		7.22	7.26		3.64	3.60		2	
19/1/2015	23:05	Cloudy	Middle	-	16.20	16.20	16.20	7.90	7.90	7.90	31.06	31.07	31.06	89.5	89.6	90.4	7.29	7.30	7.36	5.42	5.44	5.56	5	4.50
	23:06		Middle	-	16.20	16.20		7.90	7.90		31.07	31.04		91.5	91.0		7.44	7.40		5.77	5.60		4	
21/1/2015	14:30	Fine	Middle	-	17.90	17.90	18.00	8.04	8.04	8.04	30.94	30.94	30.93	83.2	83.6	83.0	6.65	6.68	6.58	2.84	2.84	2.84	6	5.00
	14:32		Middle	-	18.10	18.10		8.04	8.04		30.92	30.92		82.6	82.4		6.50	6.49		2.83	2.83		4	
23/1/2015	15:30	Fine	Middle	-	18.00	18.00	18.10	8.02	8.02	8.02	31.06	31.06	31.06	79.8	79.8	79.4	6.26	6.26	6.21	2.37	2.42	2.42	8	8.50
	15:32		Middle	-	18.20	18.20		8.02	8.02		31.06	31.06		79.0	79.1		6.19	6.12		2.44	2.43		9	
26/1/2015	15:37	Fine	Middle	-	18.80	18.80	18.95	7.98	7.98	7.98	31.07	31.07	31.07	87.1	87.0	86.5	6.71	6.70	6.67	3.17	3.17	3.17	4	4.00
	15:39		Middle	-	19.10	19.10		7.98	7.98		31.07	31.07		86.7	85.3		6.68	6.57		3.18	3.14		4	

Remarks:

Single underline denotes exceedance over Action Level.
Double underline denotes exceedance over Limit Level.

Due to malfunctioning of the intake transfer pump and resulting unavailability of seawater supply to Windsor House cooling intake pump house at the designated water tank, the water quality monitoring at the monitoring station C7 was cancelled on 8 Jan 2015 during flood tide and ebb tide.



**Water Monitoring Result at C1 - HKCEC
Mid-Ebb Tide**

Date	Time	Weather Condition	Sampling Depth		Water Temperature			pH			Salinity		DO Saturation		DO		Turbidity		Suspended Solids					
					°C			-			ppt		%		mg/L		NTU		mg/L					
					Value	Average		Value	Average		Value	Average	Value	Average	Value	Average	Value	Average	Value	Average				
29/12/2014	6:15	Cloudy	Middle	2.5	15.70	15.70	15.65	7.92	7.92	7.92	30.96	30.96	30.99	85.9	86.8	86.3	7.08	7.15	7.11	1.47	1.39	1.45	3	3.00
	6:16		Middle	2.5	15.60	15.60		7.92	7.92		31.01	31.04		86.4	86.0		7.12	7.09		1.44	1.51		3	
31/12/2014	19:10	Cloudy	Middle	3.0	17.80	17.80	17.80	8.09	8.09	8.09	31.50	31.50	31.50	71.1	70.7	70.7	5.59	5.55	5.56	2.31	2.29	2.30	3	3.50
	19:12		Middle	3.0	17.80	17.80		8.09	8.09		31.50	31.50		70.5	70.5		5.54	5.54		2.28	2.31		4	
3/1/2015	2:48	Cloudy	Middle	2.0	16.80	16.80	16.80	7.94	7.94	7.94	30.73	30.73	30.73	81.0	81.5	81.5	6.54	6.57	6.57	2.14	2.11	2.09	<2	<2
	2:49		Middle	2.0	16.80	16.80		7.94	7.94		30.73	30.73		81.6	81.7		6.58	6.59		2.06	2.04		<2	
6/1/2015	4:03	Cloudy	Middle	2.0	18.30	18.30	18.30	7.74	7.74	7.75	31.52	31.52	31.52	86.1	85.8	85.9	6.71	6.69	6.70	1.85	1.71	1.70	3	3.00
	4:04		Middle	2.0	18.30	18.30		7.76	7.76		31.52	31.52		86.0	85.8		6.70	6.69		1.58	1.64		3	
8/1/2015	2:56	Cloudy	Middle	2.0	17.00	17.00	16.98	7.86	7.86	7.87	31.45	31.46	31.46	81.7	81.9	81.6	6.54	6.55	6.53	1.95	1.98	1.95	8	8.00
	2:57		Middle	2.0	16.90	17.00		7.87	7.87		31.46	31.46		81.4	81.3		6.51	6.51		1.99	1.89		8	
10/1/2015	4:03	Cloudy	Middle	2.5	16.80	16.80	16.75	7.91	7.91	7.91	31.27	31.27	31.27	78.8	79.1	78.7	6.34	6.37	6.33	2.24	2.26	2.27	<2	2.00
	4:04		Middle	2.5	16.70	16.70		7.91	7.91		31.27	31.28		78.9	77.8		6.35	6.27		2.30	2.28		2	
12/1/2015	5:29	Cloudy	Middle	2.0	17.00	17.00	16.95	7.72	7.72	7.74	31.28	31.28	31.29	85.6	87.7	87.4	6.89	7.02	7.00	2.74	2.67	2.61	3	2.50
	5:30		Middle	2.0	16.90	16.90		7.75	7.75		31.30	31.30		88.0	88.2		7.04	7.06		2.53	2.50		2	
14/1/2015	16:42	Fine	Middle	3.0	17.80	17.80	17.85	7.88	7.88	7.90	31.88	31.88	31.84	80.0	77.8	77.6	6.25	6.11	6.08	2.30	2.32	2.33	2	3.00
	16:44		Middle	3.0	17.90	17.90		7.92	7.92		31.80	31.80		76.6	75.8		6.00	5.95		2.34	2.35		4	
16/1/2015	22:17	Cloudy	Middle	3.0	16.90	16.90	16.90	7.96	7.96	7.96	29.92	29.50	29.99	78.7	78.6	79.3	6.31	6.30	6.36	5.39	5.27	5.23	4	4.00
	22:18		Middle	3.0	16.90	16.90		7.96	7.96		30.19	30.34		79.8	80.2		6.40	6.43		5.24	5.03		4	
19/1/2015	2:54	Cloudy	Middle	2.0	15.60	15.60	15.55	7.94	7.94	7.95	31.05	31.05	31.08	85.4	85.5	85.6	7.05	7.05	7.06	4.34	4.14	4.15	4	3.50
	2:55		Middle	2.0	15.50	15.50		7.95	7.95		31.09	31.11		85.7	85.8		7.06	7.07		4.09	4.04		3	
21/1/2015	13:15	Fine	Middle	3.0	18.60	18.60	18.75	8.05	8.05	8.05	31.33	31.33	31.28	87.2	87.8	87.3	6.73	6.77	6.73	4.81	5.07	4.91	13	12.50
	13:17		Middle	3.0	18.90	18.90		8.05	8.05		31.23	31.23		87.2	86.9		6.72	6.69		4.91	4.86		12	
23/1/2015	14:25	Fine	Middle	2.5	17.80	17.80	17.90	8.02	8.02	8.02	31.26	31.26	31.26	84.8	84.0	83.4	6.65	6.57	6.52	4.32	4.32	4.36	6	6.00
	14:27		Middle	2.5	18.00	18.00		8.02	8.02		31.26	31.26		81.9	82.9		6.40	6.47		4.37	4.41		6	
26/1/2015	16:30	Fine	Middle	3.0	18.40	18.40	18.55	8.03	8.03	8.03	31.27	31.27	31.27	83.5	84.0	84.1	6.48	6.52	6.52	6.39	6.14	6.21	8	8.00
	16:32		Middle	3.0	18.70	18.70		8.03	8.03		31.26	31.26		84.1	84.9		6.52	6.56		6.14	6.15		8	

Remarks:
Single underline denotes exceedance over Action Level.
Double underline denotes exceedance over Limit Level.



**Water Monitoring Result at P1 - HKCEC Phase I
Mid-Ebb Tide**

Date	Time	Weather Condition	Sampling Depth		Water Temperature			pH			Salinity		DO Saturation		DO		Turbidity		Suspended Solids					
					°C		-		ppt		%		mg/L		NTU		mg/L							
					Value	Average	Value	Average	Value	Average	Value	Average	Value	Average	Value	Average	Value	Average	Value	Average				
29/12/2014	5:31	Cloudy	Middle	2.5	14.80	14.80	14.80	7.98	7.98	7.98	31.55	31.54	31.54	83.2	83.9	83.3	6.95	7.00	6.95	1.53	1.56	1.65	<2	<2
	5:32		Middle	2.5	14.80	14.80		7.98	7.98		31.54	31.54		83.3	82.9		6.95	6.91		1.71	1.80		<2	
31/12/2014	19:14	Cloudy	Middle	3.0	17.60	17.60	17.60	8.10	8.10	8.11	31.56	31.56	31.56	71.2	71.3	70.9	5.62	5.63	5.60	2.45	2.46	2.48	3	3.00
	19:16		Middle	3.0	17.60	17.60		8.11	8.11		31.55	31.55		70.9	70.3		5.59	5.55		2.50	2.49		3	
3/1/2015	2:12	Cloudy	Middle	2.0	16.50	16.50	16.50	7.95	7.95	7.95	31.45	31.45	31.46	82.5	83.1	83.3	6.65	6.70	6.72	1.04	1.06	1.08	<2	<2
	2:13		Middle	2.0	16.50	16.50		7.95	7.95		31.46	31.46		83.1	84.5		6.71	6.82		1.09	1.11		<2	
6/1/2015	3:28	Cloudy	Middle	2.0	18.40	18.40	18.45	7.56	7.56	7.59	31.20	31.21	31.21	85.5	87.0	86.4	6.65	6.77	6.72	2.65	2.68	2.56	4	4.00
	3:29		Middle	2.0	18.50	18.50		7.61	7.61		31.22	31.22		86.7	86.4		6.75	6.72		2.78	2.14		4	
8/1/2015	2:15	Cloudy	Middle	2.0	16.70	16.70	16.65	7.77	7.77	7.79	31.47	31.47	31.48	84.9	85.8	85.4	6.85	6.91	6.88	1.75	1.90	1.94	7	7.50
	2:16		Middle	2.0	16.60	16.60		7.80	7.80		31.48	31.48		85.6	85.2		6.89	6.86		2.01	2.10		8	
10/1/2015	3:33	Cloudy	Middle	2.5	16.10	16.10	16.10	7.87	7.87	7.88	31.39	31.39	31.40	83.4	83.6	83.3	6.82	6.82	6.79	1.77	1.84	1.82	3	2.50
	3:34		Middle	2.5	16.10	16.10		7.88	7.88		31.40	31.40		82.4	83.7		6.71	6.81		1.75	1.90		2	
12/1/2015	4:45	Cloudy	Middle	2.0	16.70	16.70	16.70	7.78	7.78	7.78	31.37	31.37	31.37	84.3	83.9	84.0	6.78	6.75	6.75	2.33	2.37	2.26	3	2.50
	4:46		Middle	2.0	16.70	16.70		7.78	7.78		31.37	31.37		83.7	83.9		6.73	6.75		2.19	2.15		2	
14/1/2015	17:04	Fine	Middle	3.0	17.10	17.10	17.25	7.97	7.97	7.98	31.72	31.72	31.73	76.1	73.3	72.7	6.03	5.81	5.76	2.26	2.31	2.31	4	3.50
	17:06		Middle	3.0	17.40	17.40		7.98	7.98		31.74	31.74		71.0	70.3		5.62	5.57		2.32	2.33		3	
16/1/2015	21:25	Cloudy	Middle	3.0	16.80	16.80	16.80	7.85	7.85	7.85	28.61	28.61	28.60	85.1	85.3	85.4	6.95	6.97	6.97	9.19	9.09	9.10	7	7.50
	21:26		Middle	3.0	16.80	16.80		7.85	7.85		28.59	28.59		85.5	85.7		6.96	6.98		9.06	9.04		8	
19/1/2015	2:13	Cloudy	Middle	2.0	15.00	15.00	15.00	7.95	7.95	7.95	31.00	31.00	31.05	92.9	93.8	93.6	7.74	7.81	7.79	6.19	6.27	6.15	4	4.00
	2:14		Middle	2.0	15.00	15.00		7.95	7.95		31.07	31.11		93.7	93.9		7.80	7.82		6.10	6.05		4	
21/1/2015	13:20	Fine	Middle	3.0	17.80	17.80	17.95	8.04	8.04	8.04	31.16	31.16	31.15	83.2	84.5	84.2	6.53	6.65	6.61	4.02	4.09	4.05	8	9.00
	13:22		Middle	3.0	18.10	18.10		8.04	8.04		31.13	31.13		84.2	84.7		6.61	6.65		4.09	4.00		10	
23/1/2015	14:50	Fine	Middle	2.5	17.80	17.80	17.90	8.03	8.03	8.03	31.23	31.23	31.23	83.2	84.0	83.5	6.54	6.60	6.56	6.17	6.16	6.07	11	11.50
	14:52		Middle	2.5	18.00	18.00		8.03	8.03		31.22	31.22		83.8	82.8		6.58	6.50		6.01	5.95		12	
26/1/2015	16:51	Fine	Middle	3.0	18.50	18.50	18.55	8.00	8.00	8.00	31.21	31.21	31.22	79.6	79.7	79.7	6.20	6.20	6.20	3.34	3.32	3.32	4	3.50
	16:52		Middle	3.0	18.60	18.60		8.00	8.00		31.22	31.22		79.8	79.6		6.21	6.19		3.30	3.30		3	

Remarks:
Single underline denotes exceedance over Action Level.
Double underline denotes exceedance over Limit Level.



**Water Monitoring Result at P3 - APA
Mid-Ebb Tide**

Date	Time	Weather Condition	Sampling Depth		Water Temperature			pH			Salinity		DO Saturation		DO		Turbidity		Suspended Solids					
					°C			-			ppt		%		mg/L		NTU		mg/L					
					Value	Average		Value	Average		Value	Average	Value	Average	Value	Average	Value	Average	Value	Average				
29/12/2014	5:39	Cloudy	Middle	2.5	15.50	15.50	15.45	7.96	7.96	7.97	31.30	31.30	31.32	86.7	87.0	87.0	7.16	7.18	7.18	1.52	1.81	1.79	3	3.00
	5:40		Middle	2.5	15.40	15.40		7.97	7.97		31.34	31.33		87.1	87.2		7.19	7.19		1.89	1.92		3	
31/12/2014	19:18	Cloudy	Middle	3.0	17.50	17.50	17.50	8.10	8.10	8.10	31.53	31.53	31.54	71.4	71.9	71.8	5.65	5.69	5.68	2.18	2.38	2.33	4	3.00
	19:20		Middle	3.0	17.50	17.50		8.09	8.09		31.54	31.54		71.9	71.9		5.69	5.69		2.40	2.35		2	
3/1/2015	2:21	Cloudy	Middle	2.0	16.60	16.60	16.60	7.94	7.94	7.95	31.24	31.24	31.25	84.7	85.3	85.3	6.83	6.88	6.88	2.02	2.10	2.03	2	2.00
	2:22		Middle	2.0	16.60	16.60		7.95	7.95		31.25	31.25		85.6	85.4		6.91	6.89		2.00	1.98		2	
6/1/2015	3:40	Cloudy	Middle	2.0	18.30	18.30	18.30	7.78	7.78	7.79	31.51	31.51	31.52	87.9	85.5	86.6	6.84	6.66	6.75	1.95	1.90	1.97	5	5.50
	3:41		Middle	2.0	18.30	18.30		7.80	7.80		31.53	31.53		86.3	86.7		6.73	6.75		1.99	2.03		6	
8/1/2015	2:21	Cloudy	Middle	2.0	16.60	16.60	16.60	7.88	7.88	7.88	31.51	31.51	31.51	84.1	83.9	83.9	6.78	6.76	6.76	2.12	2.09	2.08	7	6.50
	2:22		Middle	2.0	16.60	16.60		7.88	7.88		31.51	31.51		83.8	83.7		6.75	6.75		2.06	2.03		6	
10/1/2015	3:40	Cloudy	Middle	2.5	16.40	16.40	16.40	7.93	7.93	7.93	31.37	31.37	31.38	82.0	81.9	81.8	6.68	6.64	6.64	2.02	1.99	1.97	3	2.50
	3:41		Middle	2.5	16.40	16.40		7.93	7.93		31.38	31.38		81.8	81.6		6.62	6.60		1.91	1.96		2	
12/1/2015	4:57	Cloudy	Middle	2.0	16.90	16.90	16.90	7.82	7.82	7.83	31.39	31.39	31.39	80.0	80.7	80.9	6.42	6.46	6.49	2.02	2.11	2.05	2	2.00
	4:58		Middle	2.0	16.90	16.90		7.83	7.83		31.39	31.39		81.3	81.7		6.52	6.57		2.08	1.98		<2	
14/1/2015	17:00	Fine	Middle	3.0	17.30	17.30	17.25	7.90	7.90	7.93	31.62	31.65	31.69	70.0	69.0	68.6	5.56	5.48	5.45	2.89	2.91	2.89	2	3.00
	17:02		Middle	3.0	17.20	17.20		7.96	7.96		31.74	31.74		68.1	67.1		5.41	5.33		2.90	2.87		4	
16/1/2015	23:33	Cloudy	Middle	3.0	16.60	16.60	16.60	7.90	7.90	7.91	28.46	28.46	28.86	90.2	89.2	88.9	7.35	7.28	7.25	5.02	5.25	5.05	5	4.50
	23:34		Middle	3.0	16.60	16.60		7.91	7.91		29.26	29.26		88.3	87.7		7.21	7.15		5.04	4.90		4	
19/1/2015	2:20	Cloudy	Middle	2.0	15.30	15.30	15.30	7.96	7.96	7.94	31.12	31.12	31.11	84.1	84.8	84.9	6.99	7.06	7.05	5.12	5.19	5.17	5	4.50
	2:21		Middle	2.0	15.30	15.30		7.92	7.92		31.13	31.07		85.3	85.4		7.07	7.08		5.24	5.14		4	
21/1/2015	13:25	Fine	Middle	2.5	17.80	17.80	17.75	8.04	8.04	8.04	31.15	31.15	31.15	83.2	83.8	82.9	6.58	6.62	6.55	5.67	5.64	5.65	10	10.00
	13:27		Middle	2.5	17.70	17.70		8.04	8.04		31.14	31.14		82.4	82.0		6.51	6.48		5.64	5.63		10	
23/1/2015	14:40	Fine	Middle	2.5	17.50	17.50	17.60	8.03	8.03	8.03	31.26	31.26	31.26	80.4	80.5	80.4	6.37	6.37	6.36	5.94	5.71	5.75	8	8.00
	14:42		Middle	2.5	17.70	17.70		8.03	8.03		31.25	31.25		80.7	80.0		6.38	6.33		5.75	5.58		8	
26/1/2015	16:47	Fine	Middle	3.0	18.10	18.10	18.10	8.00	8.00	8.00	31.26	31.26	31.26	80.3	80.5	80.8	6.30	6.31	6.33	3.85	3.76	3.79	4	4.50
	16:49		Middle	3.0	18.10	18.10		8.00	8.00		31.25	31.25		81.0	81.5		6.34	6.38		3.76	3.78		5	

Remarks:
Single underline denotes exceedance over Action Level.
Double underline denotes exceedance over Limit Level.



**Water Monitoring Result at P4 - SOC
Mid-Ebb Tide**

Date	Time	Weather Condition	Sampling Depth		Water Temperature			pH			Salinity		DO Saturation		DO		Turbidity		Suspended Solids					
					°C			-			ppt		%		mg/L		NTU		mg/L					
					Value	Average		Value	Average		Value	Average	Value	Average	Value	Average	Value	Average	Value	Average				
29/12/2014	5:56	Cloudy	Middle	2.5	15.40	15.40	15.40	7.94	7.94	7.94	31.40	31.40	31.32	87.3	88.8	87.9	7.19	7.33	7.26	1.48	1.40	1.46	<2	<2
	5:57		Middle	2.5	15.40	15.40		7.94	7.94		31.23	31.23		86.8	88.7		7.18	7.32		1.51	1.46		<2	
31/12/2014	19:22	Cloudy	Middle	3.0	17.70	17.70	17.70	8.09	8.09	8.09	31.52	31.52	31.53	66.2	67.5	66.8	5.23	5.33	5.27	3.56	3.54	3.55	2	2.00
	19:24		Middle	3.0	17.70	17.70		8.09	8.09		31.54	31.54		67.0	66.5		5.29	5.24		3.53	3.56		2	
3/1/2015	2:30	Cloudy	Middle	2.0	16.60	16.60	16.65	7.90	7.90	7.91	31.19	31.19	31.19	90.0	90.8	90.8	7.25	7.31	7.32	1.43	1.45	1.43	3	2.50
	2:31		Middle	2.0	16.70	16.70		7.91	7.91		31.19	31.19		91.1	91.3		7.34	7.36		1.51	1.32		2	
6/1/2015	3:48	Cloudy	Middle	2.0	18.30	18.30	18.30	7.68	7.68	7.70	31.51	31.51	31.51	89.7	89.9	90.8	6.98	6.99	7.07	1.16	1.00	1.10	2	2.00
	3:49		Middle	2.0	18.30	18.30		7.71	7.71		31.50	31.50		91.8	91.9		7.15	7.17		1.08	1.14		2	
8/1/2015	2:34	Cloudy	Middle	2.0	16.60	16.60	16.60	7.72	7.72	7.74	31.19	31.19	31.20	91.1	90.9	91.1	7.34	7.33	7.35	2.52	2.62	2.49	3	2.50
	2:35		Middle	2.0	16.60	16.60		7.76	7.76		31.20	31.20		91.3	91.2		7.36	7.35		2.39	2.42		2	
10/1/2015	3:50	Cloudy	Middle	2.5	16.20	16.20	16.20	7.83	7.83	7.85	31.11	31.11	31.14	89.1	89.6	88.8	7.25	7.29	7.22	1.85	1.77	1.81	<2	<2
	3:51		Middle	2.5	16.20	16.20		7.86	7.86		31.17	31.17		88.1	88.3		7.16	7.18		1.75	1.88		<2	
12/1/2015	5:09	Cloudy	Middle	2.0	16.60	16.60	16.65	7.80	7.80	7.81	31.41	31.41	31.41	88.0	88.3	88.7	7.08	7.11	7.14	1.66	1.40	1.49	<2	<2
	5:10		Middle	2.0	16.70	16.70		7.81	7.81		31.40	31.40		88.9	89.7		7.16	7.22		1.46	1.44		<2	
14/1/2015	16:51	Fine	Middle	3.0	17.20	17.20	17.20	7.91	7.91	7.93	31.69	31.69	31.71	76.7	74.4	73.6	6.09	5.91	5.85	1.64	1.61	1.60	4	3.50
	16:53		Middle	3.0	17.20	17.20		7.95	7.95		31.72	31.72		72.5	70.9		5.76	5.63		1.58	1.57		3	
16/1/2015	21:45	Cloudy	Middle	3.0	16.60	16.60	16.60	7.92	7.92	7.92	29.03	29.03	29.23	89.7	90.1	90.1	7.33	7.36	7.35	4.30	4.32	4.22	5	5.00
	21:46		Middle	3.0	16.60	16.60		7.92	7.92		29.42	29.42		90.3	90.1		7.36	7.35		4.12	4.14		5	
19/1/2015	2:27	Cloudy	Middle	2.0	15.30	15.30	15.30	7.91	7.91	7.92	30.83	30.83	30.83	87.7	88.4	88.0	7.28	7.33	7.30	5.62	5.29	5.30	6	6.00
	2:28		Middle	2.0	15.30	15.30		7.92	7.92		30.83	30.83		88.0	87.9		7.29	7.29		5.22	5.06		6	
21/1/2015	13:30	Fine	Middle	2.5	17.60	17.60	17.65	8.03	8.03	8.03	31.14	31.14	31.14	82.9	83.9	83.5	6.56	6.64	6.60	4.97	4.82	4.84	9	8.00
	13:32		Middle	2.5	17.70	17.70		8.03	8.03		31.14	31.14		83.7	83.4		6.62	6.59		4.79	4.77		7	
23/1/2015	14:35	Fine	Middle	2.5	17.50	17.50	17.60	8.02	8.02	8.02	31.19	31.19	31.20	76.0	76.4	76.5	6.02	6.05	6.06	4.45	4.57	4.48	5	5.50
	14:37		Middle	2.5	17.70	17.70		8.02	8.02		31.21	31.21		77.0	76.6		6.09	6.06		4.58	4.33		6	
26/1/2015	16:42	Fine	Middle	3.0	18.00	18.00	18.05	8.01	8.01	8.01	31.27	31.27	31.27	80.5	80.7	80.6	6.30	6.32	6.31	4.52	4.64	4.56	5	4.50
	16:44		Middle	3.0	18.10	18.10		8.01	8.01		31.26	31.26		80.5	80.6		6.31	6.32		4.49	4.57		4	

Remarks:
Single underline denotes exceedance over Action Level.
Double underline denotes exceedance over Limit Level.



**Water Monitoring Result at P5 - WCT / RT / IT
Mid-Ebb Tide**

Date	Time	Weather Condition	Sampling Depth		Water Temperature			pH			Salinity		DO Saturation		DO		Turbidity		Suspended Solids					
					°C			-			ppt		%		mg/L		NTU		mg/L					
					Value	Average		Value	Average		Value	Average	Value	Average	Value	Average	Value	Average	Value	Average				
29/12/2014	6:04	Cloudy	Middle	2.5	15.80	15.80	15.80	7.89	7.89	7.90	31.53	31.53	31.50	81.2	80.8	81.0	6.65	6.61	6.63	1.13	1.07	1.14	<2	<2
	6:05		Middle	2.5	15.80	15.80		7.90	7.90		31.46	31.46		80.7	81.1		6.61	6.64		1.26	1.09		<2	
31/12/2014	19:26	Cloudy	Middle	3.0	17.60	17.60	17.70	8.11	8.11	8.12	31.53	31.53	31.53	69.3	68.7	68.4	5.47	5.42	5.40	2.49	2.46	2.46	2	2.00
	19:28		Middle	3.0	17.80	17.80		8.12	8.12		31.53	31.53		68.1	67.5		5.38	5.33		2.45	2.45		2	
3/1/2015	2:36	Cloudy	Middle	2.0	16.90	16.90	16.85	7.92	7.92	7.93	30.98	30.98	30.98	84.4	85.1	84.9	6.79	6.84	6.83	1.78	1.85	1.82	<2	<2
	2:37		Middle	2.0	16.80	16.80		7.93	7.93		30.98	30.98		85.2	84.7		6.85	6.82		1.76	1.87		<2	
6/1/2015	3:55	Cloudy	Middle	2.0	18.30	18.30	18.30	7.81	7.81	7.81	31.45	31.45	31.47	84.3	84.6	84.8	6.57	6.59	6.61	1.52	1.54	1.50	2	2.00
	3:56		Middle	2.0	18.30	18.30		7.81	7.81		31.49	31.49		85.1	85.3		6.63	6.65		1.50	1.45		2	
8/1/2015	2:47	Cloudy	Middle	2.0	16.90	16.90	16.85	7.84	7.84	7.84	31.49	31.49	31.50	83.7	83.9	83.6	6.72	6.73	6.71	2.08	2.10	2.07	5	5.00
	2:48		Middle	2.0	16.80	16.80		7.84	7.84		31.51	31.51		82.9	84.0		6.65	6.74		2.12	1.98		5	
10/1/2015	3:57	Cloudy	Middle	2.5	16.40	16.40	16.40	7.94	7.94	7.95	31.20	31.20	31.27	83.3	82.8	82.4	6.73	6.70	6.66	2.11	2.13	2.20	<2	<2
	3:58		Middle	2.5	16.40	16.40		7.95	7.95		31.34	31.34		82.0	81.3		6.63	6.56		2.34	2.20		<2	
12/1/2015	5:21	Cloudy	Middle	2.0	16.60	16.60	16.60	7.84	7.84	7.85	31.70	31.70	31.67	83.0	84.1	84.2	6.67	6.77	6.78	2.39	2.49	2.51	2	2.00
	5:22		Middle	2.0	16.60	16.60		7.85	7.85		31.63	31.63		84.7	85.1		6.82	6.85		2.68	2.46		2	
14/1/2015	16:47	Fine	Middle	3.0	17.20	17.20	17.30	7.82	7.82	7.88	31.77	31.77	31.78	77.2	74.2	73.9	6.11	5.88	5.85	3.82	3.79	3.69	3	3.00
	16:49		Middle	3.0	17.40	17.40		7.93	7.93		31.78	31.78		72.3	71.8		5.73	5.68		3.63	3.53		3	
16/1/2015	21:58	Cloudy	Middle	3.0	16.80	16.80	16.80	7.93	7.93	7.93	28.25	28.24	28.25	83.0	83.2	83.4	6.97	6.92	6.92	5.55	5.33	5.31	6	5.50
	21:59		Middle	3.0	16.80	16.80		7.93	7.93		28.19	28.32		83.5	83.8		6.90	6.89		5.22	5.13		5	
19/1/2015	2:41	Cloudy	Middle	2.0	15.50	15.50	15.50	7.93	7.93	7.94	31.11	31.11	31.12	88.9	89.1	89.3	7.33	7.35	7.36	4.83	4.87	4.92	5	5.00
	2:42		Middle	2.0	15.50	15.50		7.94	7.94		31.13	31.13		89.4	89.6		7.37	7.39		4.96	5.02		5	
21/1/2015	13:40	Fine	Middle	2.5	18.00	18.00	18.05	8.07	8.07	8.07	31.20	31.20	31.20	81.6	83.6	82.3	6.40	6.56	6.46	7.02	7.05	7.04	7	6.50
	13:42		Middle	2.5	18.10	18.10		8.07	8.07		31.20	31.20		82.3	81.7		6.46	6.40		7.06	7.04		6	
23/1/2015	14:31	Fine	Middle	2.5	17.50	17.50	17.70	8.02	8.02	8.03	31.23	31.23	31.22	82.7	83.7	83.0	6.53	6.64	6.56	5.44	5.36	5.41	6	6.00
	14:33		Middle	2.5	17.90	17.90		8.03	8.03		31.21	31.21		82.8	82.7		6.53	6.52		5.54	5.30		6	
26/1/2015	16:37	Fine	Middle	3.0	18.10	18.10	18.25	8.06	8.06	8.06	31.28	31.28	31.28	78.7	78.4	78.0	6.14	6.11	6.08	5.55	5.54	5.47	6	6.00
	16:39		Middle	3.0	18.40	18.40		8.06	8.06		31.27	31.27		77.6	77.3		6.05	6.02		5.46	5.31		6	

Remarks:
Single underline denotes exceedance over Action Level.
Double underline denotes exceedance over Limit Level.



**Water Monitoring Result at RW21-P789 - Sun Hung Kai Centre
Mid-Ebb Tide**

Date	Time	Weather Condition	Sampling Depth		Water Temperature			pH			Salinity		DO Saturation		DO		Turbidity		Suspended Solids					
					°C		-		ppt		%		mg/L		NTU		mg/L							
			m	Value	Average	Value	Average	Value	Average	Value	Average	Value	Average	Value	Average	Value	Average	Value	Average					
29/12/2014	4:00	Cloudy	Middle	3.5	15.00	15.00	15.00	7.84	7.84	7.86	30.41	30.42	30.43	79.8	81.7	81.3	6.67	6.84	6.81	2.74	2.72	2.71	2	2.00
	4:01		Middle	3.5	15.00	15.00		7.87	7.87		30.44	30.44		81.5	82.1		6.85	6.88		2.70	2.68		2	
31/12/2014	19:35	Cloudy	Middle	3.0	17.70	17.70	17.70	8.12	8.12	8.13	31.53	31.53	31.54	75.2	74.9	74.4	5.93	5.86	5.85	2.68	2.68	2.68	3	3.00
	19:37		Middle	3.0	17.70	17.70		8.13	8.13		31.54	31.54		74.6	72.8		5.87	5.73		2.68	2.68		3	
3/1/2015	0:10	Cloudy	Middle	3.0	17.20	17.20	17.15	7.75	7.75	7.76	31.22	31.22	31.22	91.1	91.3	91.1	7.27	7.29	7.28	2.06	2.26	2.13	2	2.50
	0:11		Middle	3.0	17.10	17.10		7.77	7.77		31.22	31.22		90.9	91.2		7.26	7.29		2.12	2.08		3	
6/1/2015	1:20	Cloudy	Middle	3.0	18.70	18.70	18.75	7.68	7.68	7.69	31.46	31.46	31.50	82.4	83.9	84.0	6.37	6.48	6.49	1.64	1.69	1.69	4	3.50
	1:21		Middle	3.0	18.80	18.80		7.69	7.69		31.53	31.53		84.7	85.1		6.54	6.57		1.81	1.61		3	
8/1/2015	1:01	Cloudy	Middle	3.0	17.50	17.50	17.45	7.77	7.77	7.78	31.38	31.38	31.38	84.8	82.9	83.4	6.70	6.54	6.60	2.06	2.10	2.05	2	2.50
	1:02		Middle	3.0	17.40	17.40		7.78	7.78		31.38	31.38		82.4	83.4		6.54	6.62		2.03	2.00		3	
10/1/2015	1:28	Cloudy	Middle	3.5	16.80	16.80	16.80	7.85	7.85	7.86	31.26	31.26	31.27	85.3	85.8	84.9	6.85	6.89	6.81	1.90	1.75	1.86	<2	<u><2</u>
	1:29		Middle	3.5	16.80	16.80		7.86	7.86		31.28	31.28		84.1	84.2		6.75	6.76		1.84	1.95		<2	
12/1/2015	2:38	Cloudy	Middle	3.5	17.10	17.10	17.10	7.78	7.78	7.79	31.20	31.20	31.24	88.0	87.8	87.2	7.02	7.00	6.96	2.88	2.78	2.91	<2	2.00
	2:39		Middle	3.5	17.10	17.10		7.80	7.80		31.27	31.27		85.9	87.2		6.86	6.97		2.95	3.02		2	
14/1/2015	19:50	Fine	Middle	3.5	15.80	15.80	15.80	7.95	7.95	7.96	31.07	31.07	31.09	81.7	81.6	81.8	6.71	6.72	6.72	4.63	4.71	4.62	3	2.50
	19:51		Middle	3.5	15.80	15.80		7.96	7.96		31.11	31.11		82.2	81.5		6.75	6.69		4.59	4.56		2	
16/1/2015	20:07	Cloudy	Middle	3.5	17.30	17.30	17.30	7.74	7.74	7.75	31.12	31.19	31.18	91.4	91.3	91.3	7.28	7.27	7.27	4.18	4.40	4.32	4	4.00
	20:08		Middle	3.5	17.30	17.30		7.76	7.76		31.20	31.21		91.3	91.1		7.27	7.26		4.25	4.43		4	
19/1/2015	0:15	Cloudy	Middle	3.0	16.10	16.10	16.10	7.87	7.87	7.87	31.02	31.02	31.03	89.3	89.9	88.7	7.36	7.37	7.29	6.10	6.01	6.04	3	3.00
	0:16		Middle	3.0	16.10	16.10		7.87	7.87		31.03	31.03		88.0	87.7		7.28	7.16		6.04	5.99		3	
21/1/2015	14:00	Fine	Middle	3.0	17.90	17.90	17.95	8.06	8.06	8.06	31.22	31.22	31.22	86.7	86.4	86.3	6.81	6.79	6.78	3.85	3.77	3.76	13	12.50
	14:02		Middle	3.0	18.00	18.00		8.06	8.06		31.21	31.21		86.2	85.9		6.77	6.74		3.73	3.70		12	
23/1/2015	15:00	Fine	Middle	3.5	18.00	18.00	18.10	8.05	8.05	8.05	31.28	31.28	31.28	81.3	81.9	81.6	6.37	6.42	6.39	4.09	4.09	4.13	7	7.50
	15:02		Middle	3.5	18.20	18.20		8.05	8.05		31.27	31.27		82.2	81.0		6.44	6.34		4.14	4.18		8	
26/1/2015	17:05	Fine	Middle	3.0	17.90	17.90	18.00	8.00	8.00	8.00	31.25	31.25	31.25	78.0	79.4	78.9	6.12	6.23	6.19	3.30	3.30	3.28	5	5.00
	17:07		Middle	3.0	18.10	18.10		8.00	8.00		31.24	31.24		79.0	79.1		6.20	6.21		3.24	3.27		5	

Remarks:
Single underline denotes exceedance over Action Level.
Double underline denotes exceedance over Limit Level.



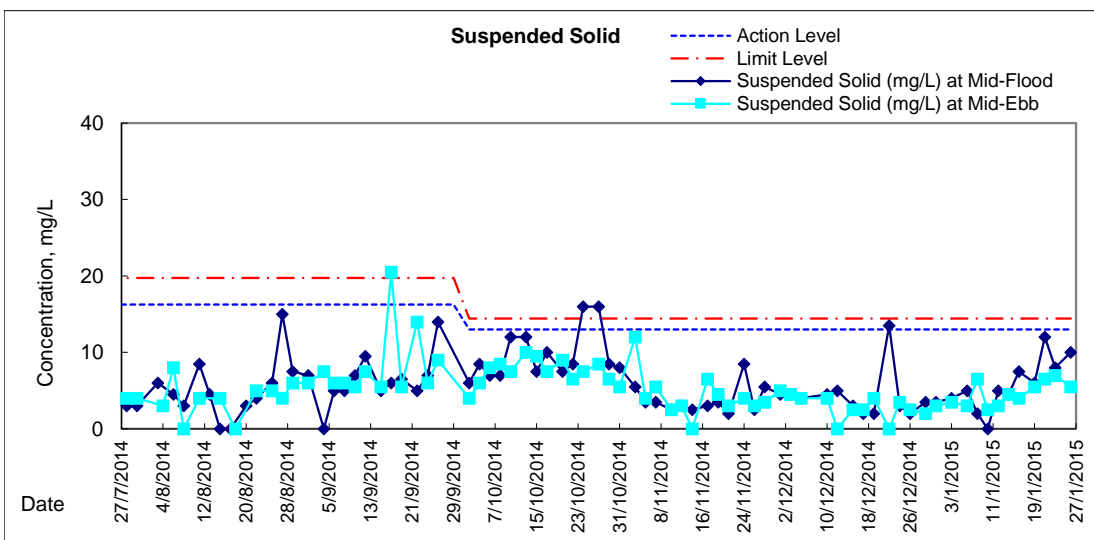
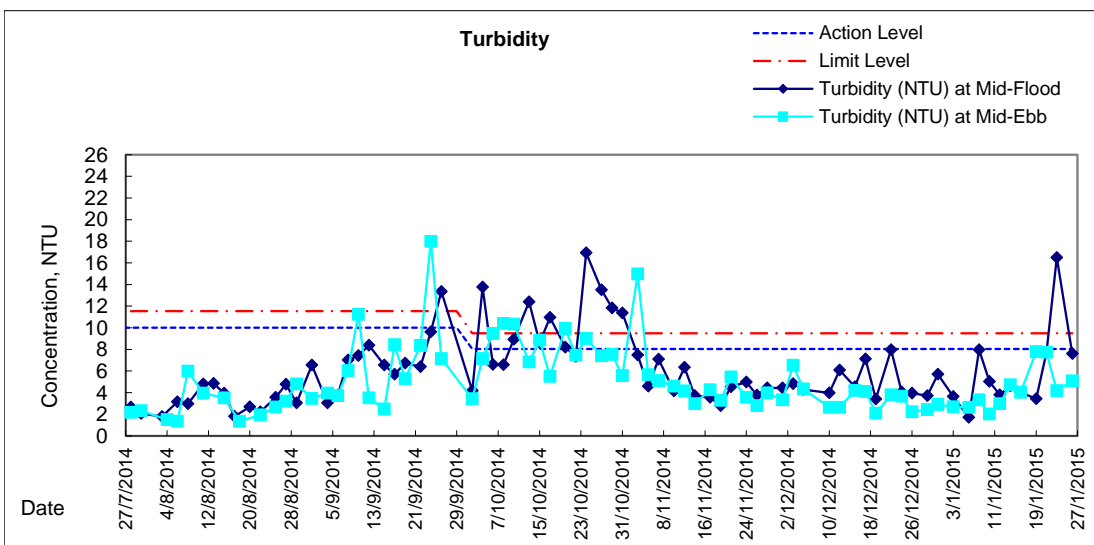
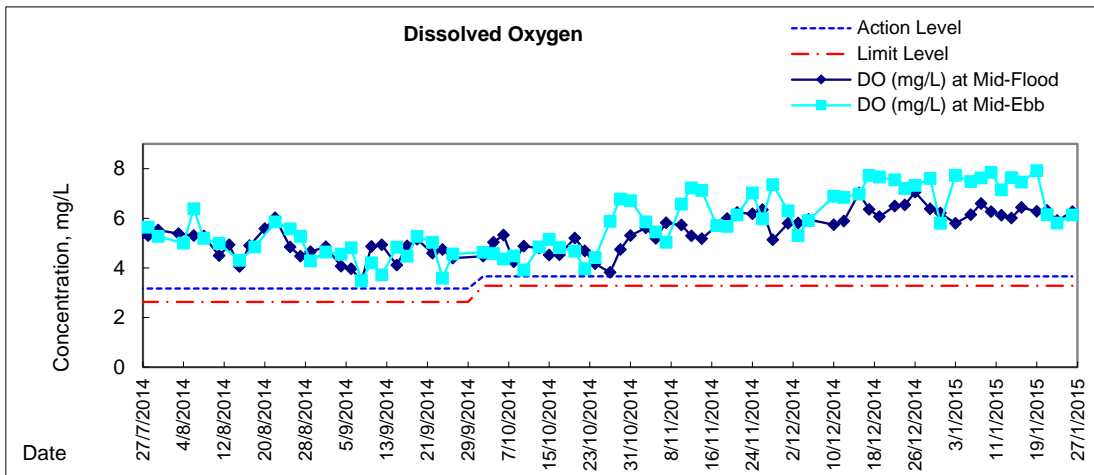
**Water Monitoring Result at WSD19 - Sheung Wan
Mid-Ebb Tide**

Date	Time	Weather Condition	Sampling Depth		Water Temperature			pH			Salinity		DO Saturation		DO		Turbidity		Suspended Solids					
					°C			-			ppt		%		mg/L		NTU		mg/L					
					Value	Average		Value	Average		Value	Average	Value	Average	Value	Average	Value	Average	Value	Average				
29/12/2014	4:45	Cloudy	Middle	3.0	15.30	15.30	15.25	7.80	7.80	7.80	31.56	31.56	31.55	92.9	92.4	92.0	7.68	7.64	7.60	2.39	2.46	2.44	2	2.00
	4:46		Middle	3.0	15.20	15.20		7.80	7.80		31.53	31.53		90.7	91.8		7.50	7.59		2.48	2.41		2	
31/12/2014	18:30	Cloudy	Middle	3.0	18.20	18.20	18.25	8.15	8.15	8.14	31.53	31.53	31.53	73.0	73.0	73.8	5.85	5.69	5.79	2.84	2.89	2.90	3	3.00
	18:32		Middle	3.0	18.30	18.30		8.12	8.12		31.53	31.53		74.3	74.7		5.79	5.83		2.93	2.93		3	
3/1/2015	1:25	Cloudy	Middle	2.5	17.10	17.10	17.10	7.68	7.68	7.69	31.25	31.27	31.27	97.1	96.9	96.9	7.75	7.73	7.73	2.74	2.79	2.68	3	3.50
	1:26		Middle	2.5	17.10	17.10		7.69	7.69		31.27	31.27		96.4	97.0		7.70	7.74		2.72	2.48		4	
6/1/2015	2:10	Cloudy	Middle	2.5	18.80	18.80	18.80	7.59	7.59	7.62	31.47	31.47	31.48	97.3	97.2	96.7	7.52	7.51	7.48	2.58	2.69	2.64	3	3.00
	2:11		Middle	2.5	18.80	18.80		7.64	7.64		31.48	31.48		96.7	95.7		7.47	7.40		2.73	2.56		3	
8/1/2015	1:37	Cloudy	Middle	2.5	17.40	17.40	17.40	7.67	7.67	7.68	31.27	31.27	31.26	95.5	96.8	96.1	7.58	7.68	7.62	3.37	3.43	3.35	7	6.50
	1:38		Middle	2.5	17.40	17.40		7.68	7.68		31.25	31.25		95.9	96.0		7.61	7.62		3.30	3.28		6	
10/1/2015	2:46	Cloudy	Middle	2.5	16.80	16.80	16.80	7.80	7.80	7.82	31.34	31.35	31.36	98.4	99.3	97.8	7.90	7.97	7.86	2.26	1.94	2.02	3	2.50
	2:47		Middle	2.5	16.80	16.80		7.83	7.83		31.38	31.38		97.0	96.6		7.79	7.76		1.84	2.02		2	
12/1/2015	3:35	Cloudy	Middle	2.5	17.10	17.10	17.10	7.84	7.84	7.85	31.39	31.39	31.39	88.5	89.4	89.5	7.06	7.13	7.14	2.97	2.89	2.98	3	3.00
	3:36		Middle	2.5	17.10	17.10		7.85	7.85		31.39	31.39		90.0	90.1		7.18	7.18		2.95	3.11		3	
14/1/2015	18:32	Fine	Middle	2.5	15.20	15.20	15.20	7.94	7.94	7.93	31.20	31.20	31.24	91.7	92.7	92.0	7.64	7.69	7.64	4.47	4.61	4.73	4	4.50
	18:33		Middle	2.5	15.20	15.20		7.92	7.92		31.28	31.28		91.6	91.8		7.61	7.62		4.88	4.95		5	
16/1/2015	19:09	Cloudy	Middle	2.5	17.30	17.30	17.30	7.66	7.66	7.67	30.96	30.96	30.98	92.0	91.5	93.6	7.33	7.30	7.46	4.04	4.12	4.04	4	4.00
	19:10		Middle	2.5	17.30	17.30		7.68	7.68		31.00	31.00		95.6	95.1		7.62	7.58		4.02	3.98		4	
19/1/2015	1:25	Cloudy	Middle	2.5	15.70	15.70	15.70	7.81	7.81	7.82	31.26	31.25	31.26	96.6	95.8	96.5	7.93	7.86	7.92	7.72	7.86	7.80	5	5.50
	1:26		Middle	2.5	15.70	15.70		7.82	7.82		31.25	31.28		97.3	96.3		7.98	7.90		7.78	7.82		6	
21/1/2015	11:15	Fine	Middle	3.0	17.40	17.40	17.45	8.04	8.04	8.04	31.15	31.15	31.16	77.6	77.5	77.3	6.16	6.15	6.14	7.89	7.60	7.74	7	6.50
	11:17		Middle	3.0	17.50	17.50		8.03	8.03		31.17	31.17		77.2	76.8		6.13	6.10		7.59	7.89		6	
23/1/2015	13:50	Fine	Middle	3.5	18.40	18.40	18.40	7.98	7.98	7.98	31.18	31.18	31.20	74.7	74.8	74.5	5.82	5.83	5.81	4.06	4.21	4.20	8	7.00
	13:52		Middle	3.5	18.40	18.40		7.98	7.98		31.21	31.21		74.3	74.2		5.80	5.79		4.25	4.26		6	
26/1/2015	15:50	Fine	Middle	3.5	18.30	18.30	18.45	7.96	7.96	7.96	31.20	31.20	31.20	78.6	79.3	78.8	6.12	6.17	6.13	5.12	5.13	5.09	5	5.50
	15:52		Middle	3.5	18.60	18.60		7.96	7.96		31.20	31.20		78.7	78.4		6.12	6.09		5.13	4.97		6	

Remarks:
Single underline denotes exceedance over Action Level.
Double underline denotes exceedance over Limit Level.

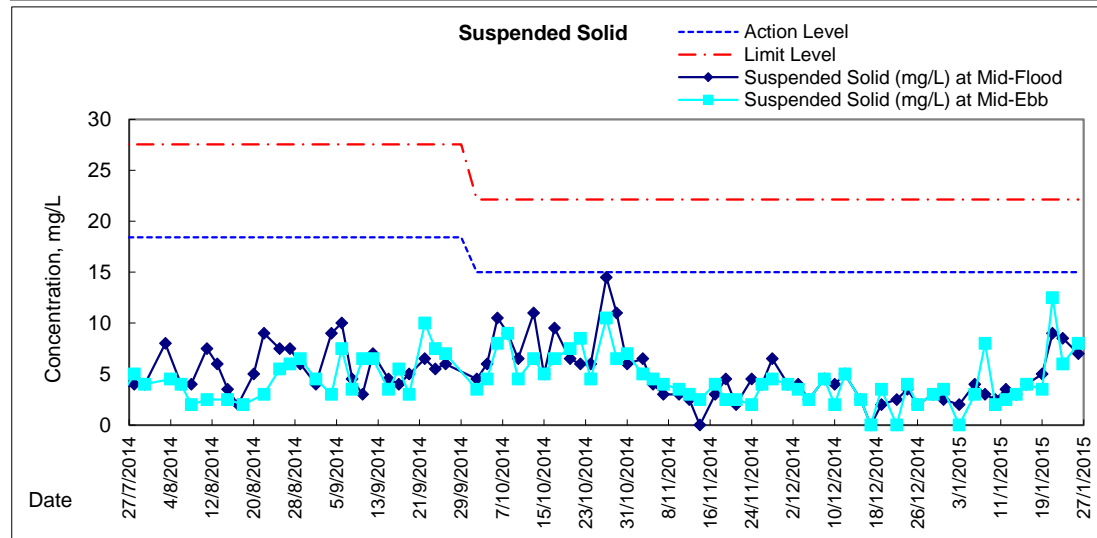
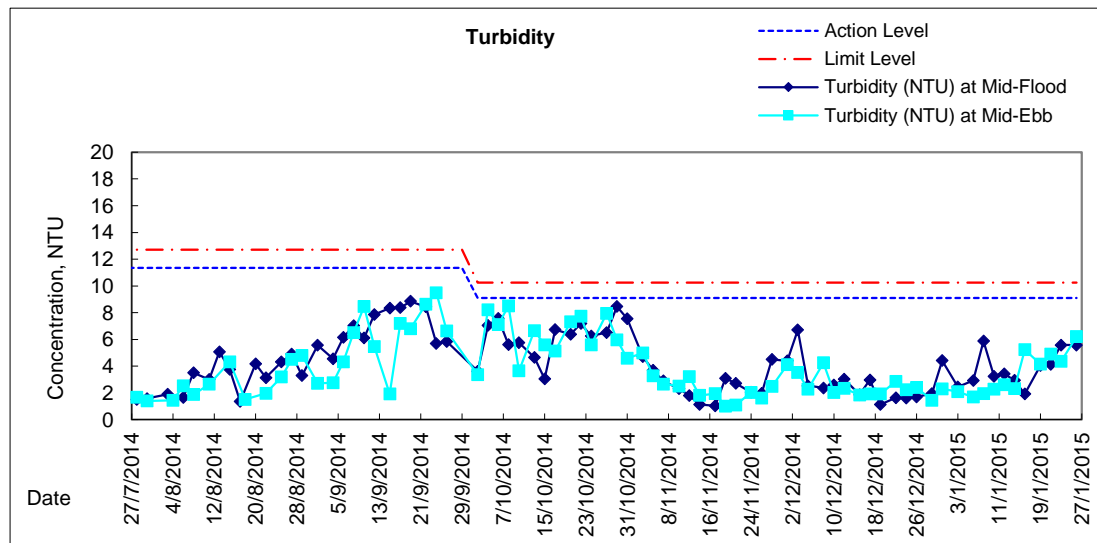
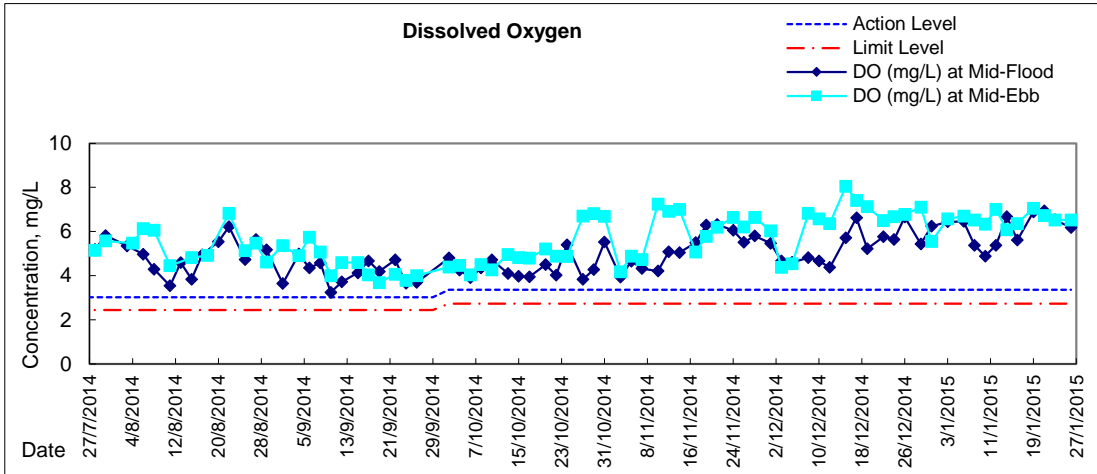


Graphic Presentation of Water Quality Result of WSD19 - Sheung Wan



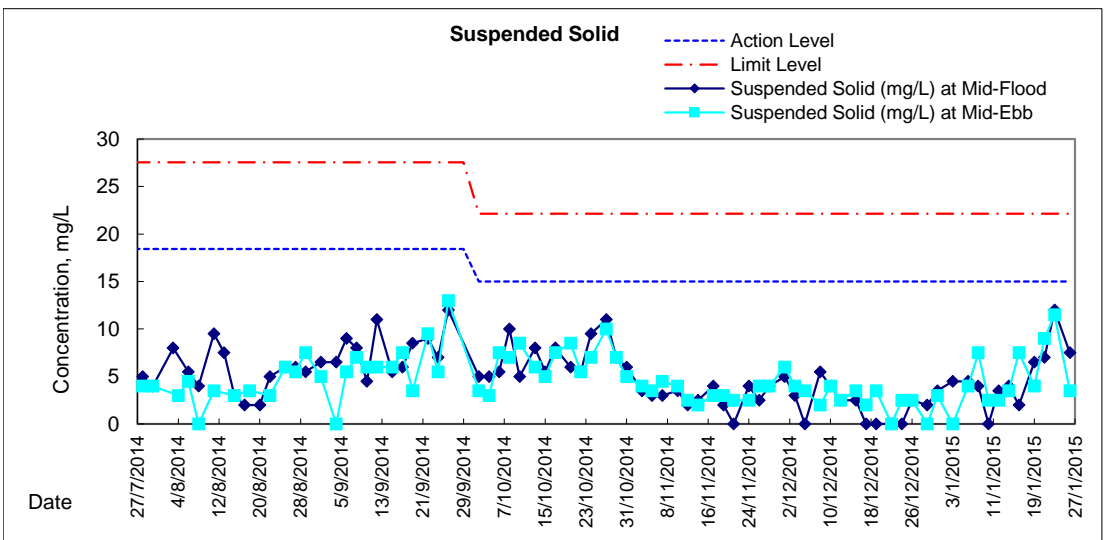
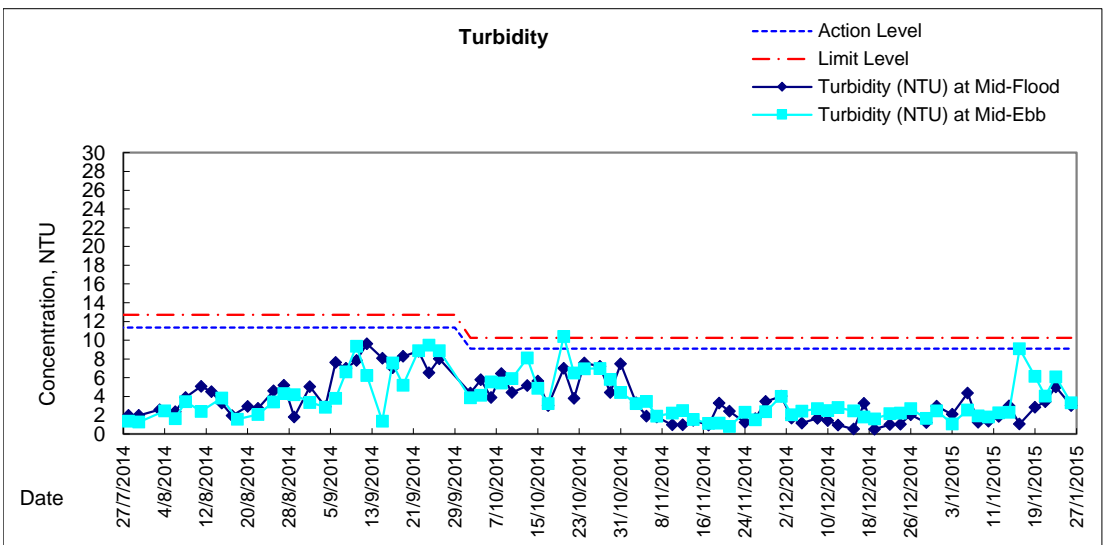
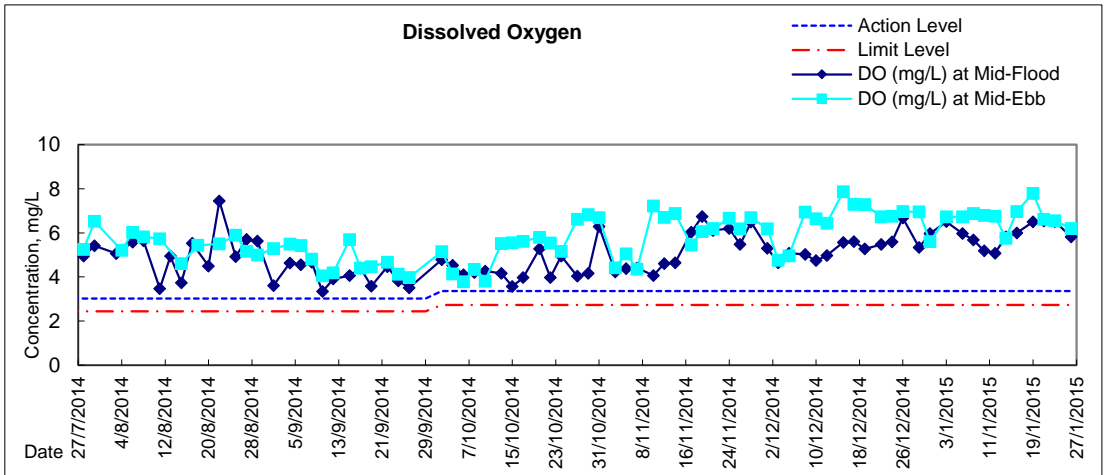


Graphic Presentation of Water Quality Result of C1 - HKCEC



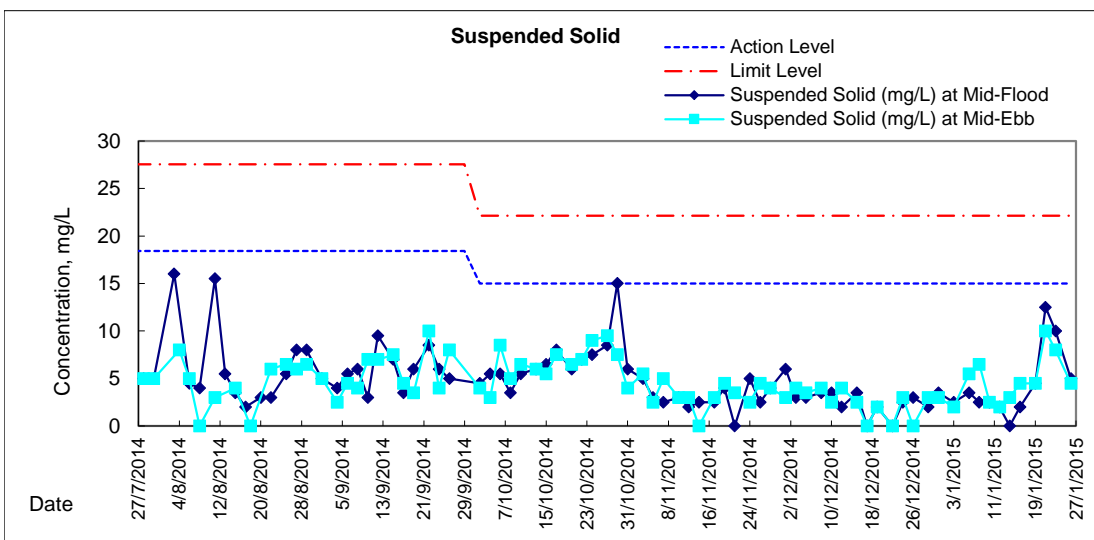
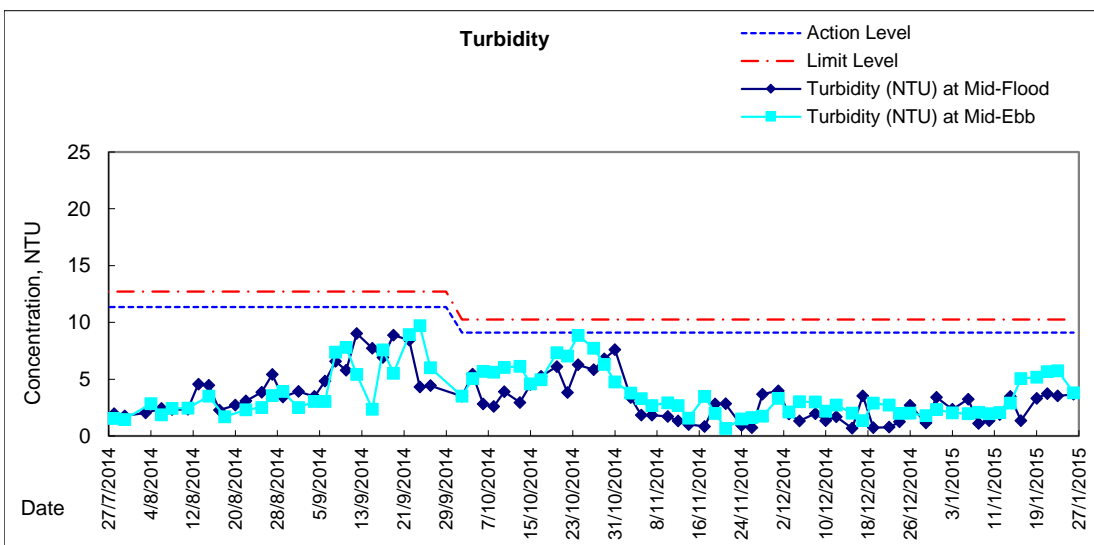
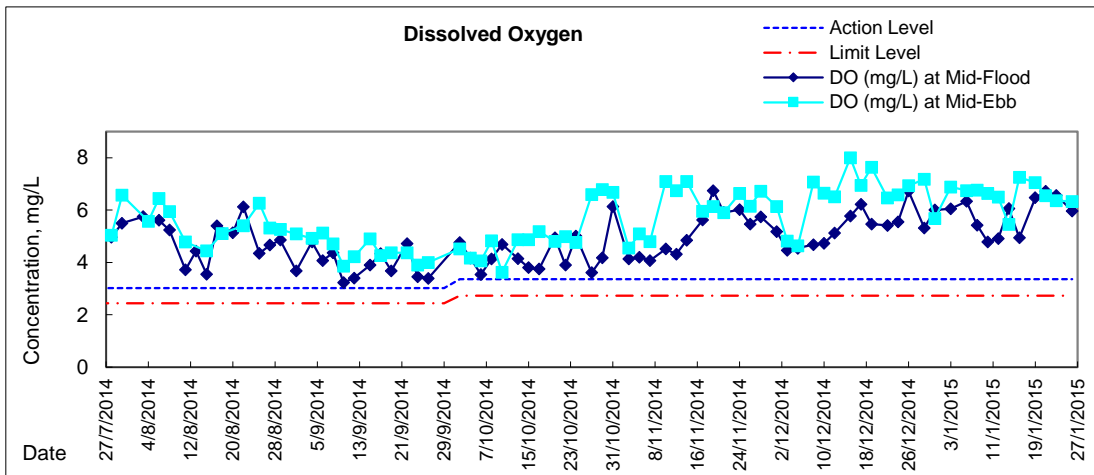


Graphic Presentation of Water Quality Result of P1 - HKCEC Phase I



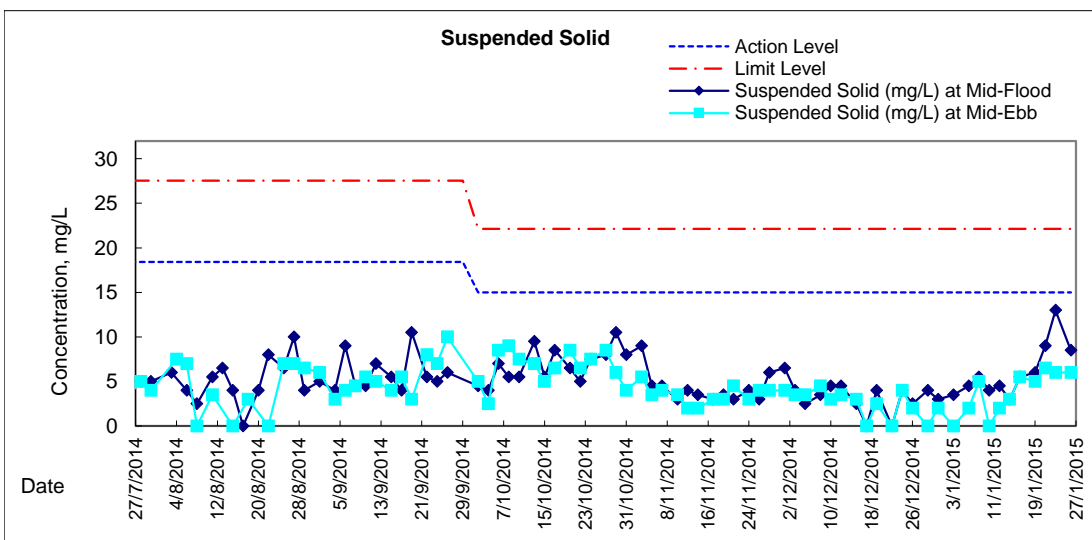
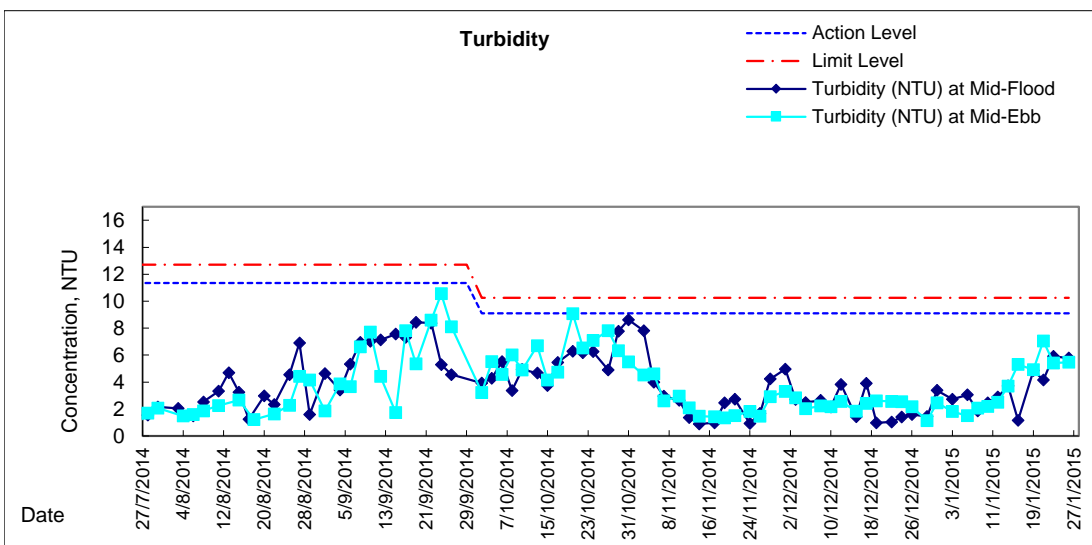
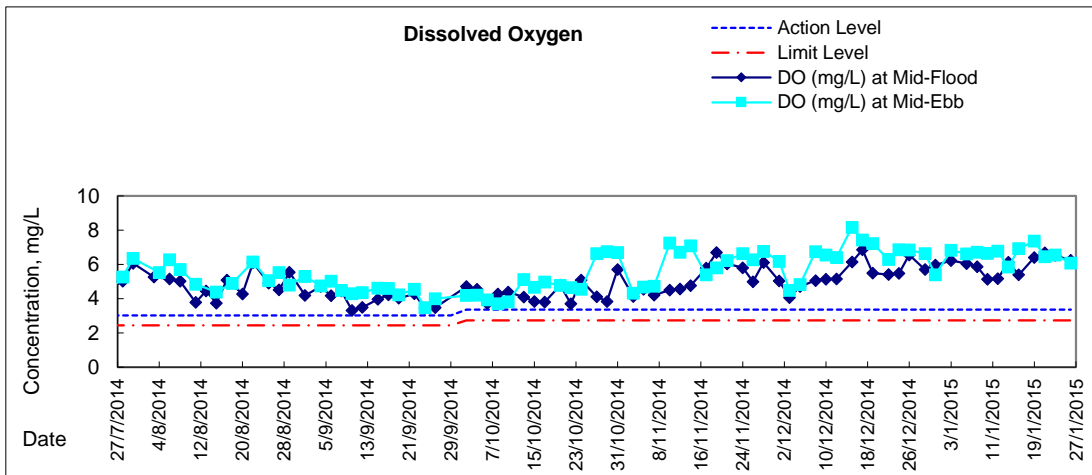


Graphic Presentation of Water Quality Result of P3 - APA



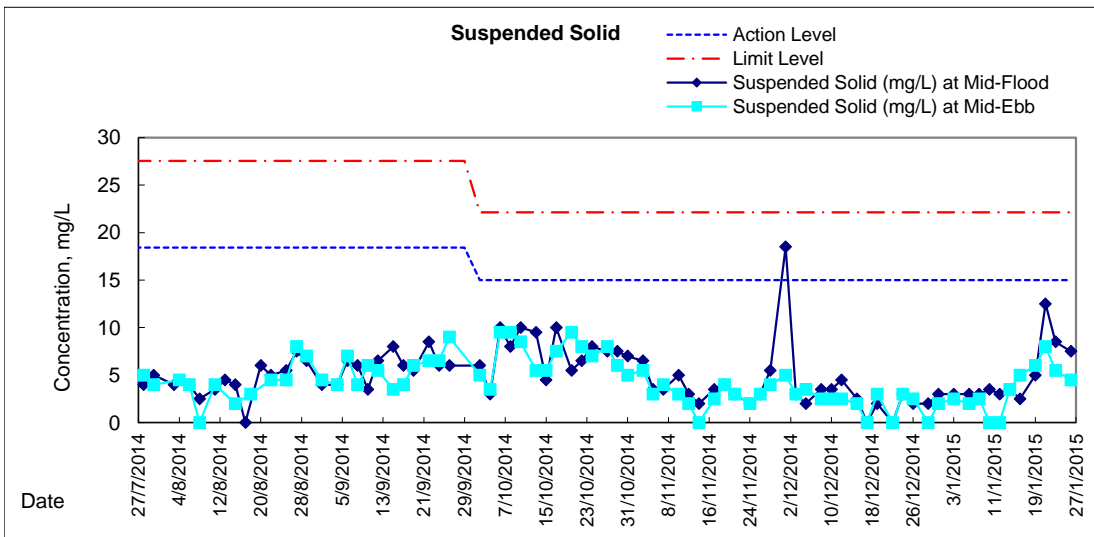
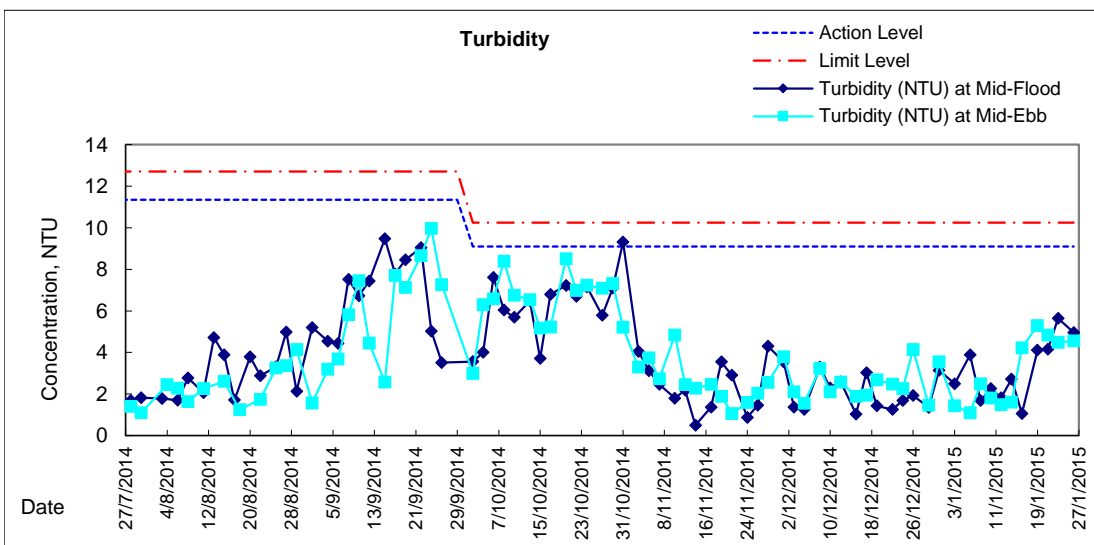
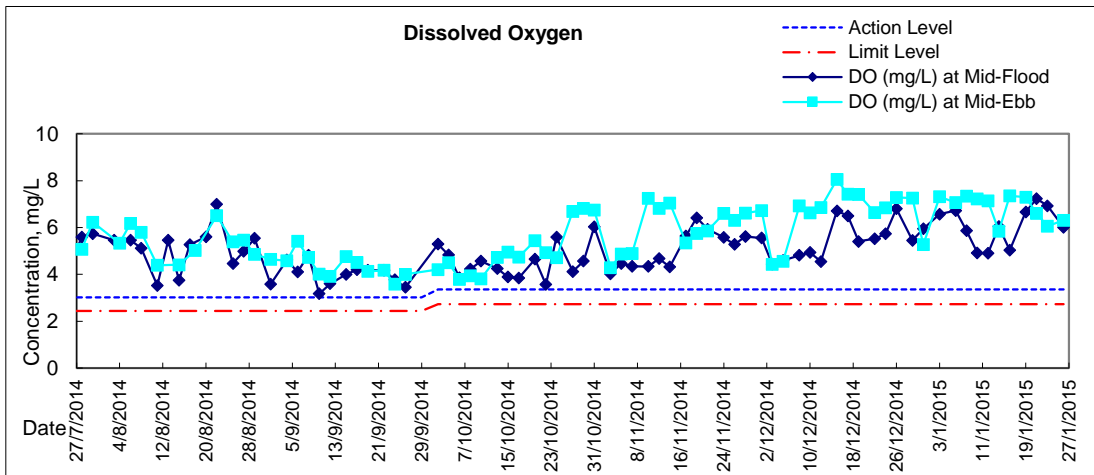


Graphic Presentation of Water Quality Result of P5 - WCT / RT / IT



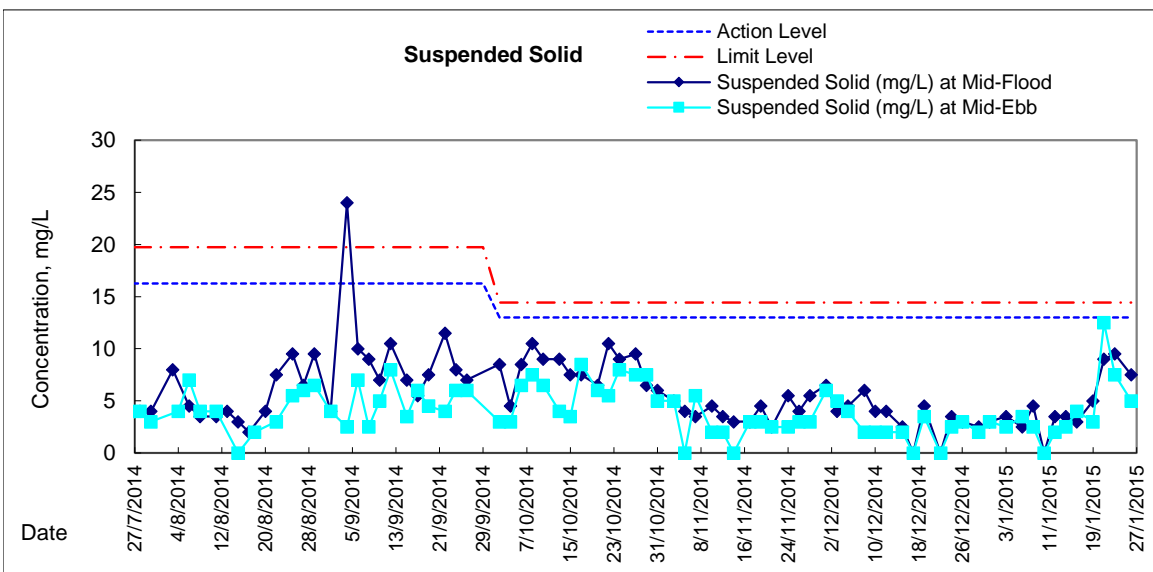
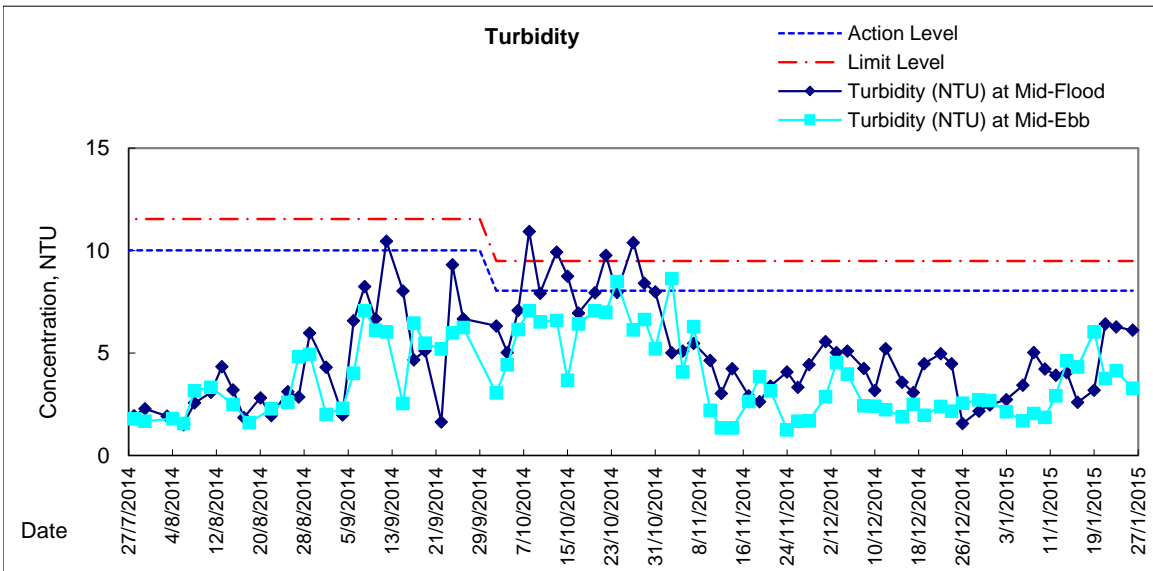
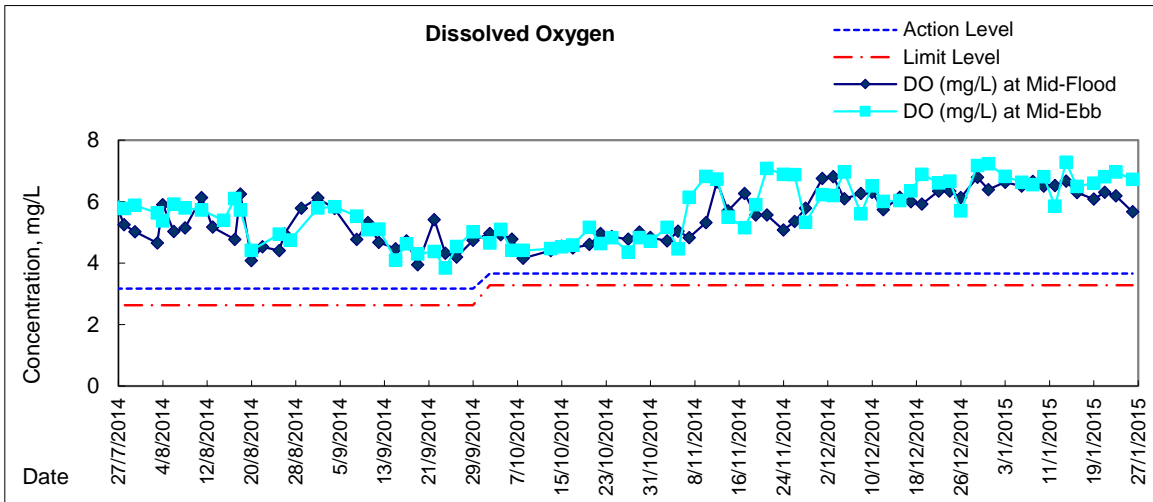


Graphic Presentation of Water Quality Result of P4 - SOC



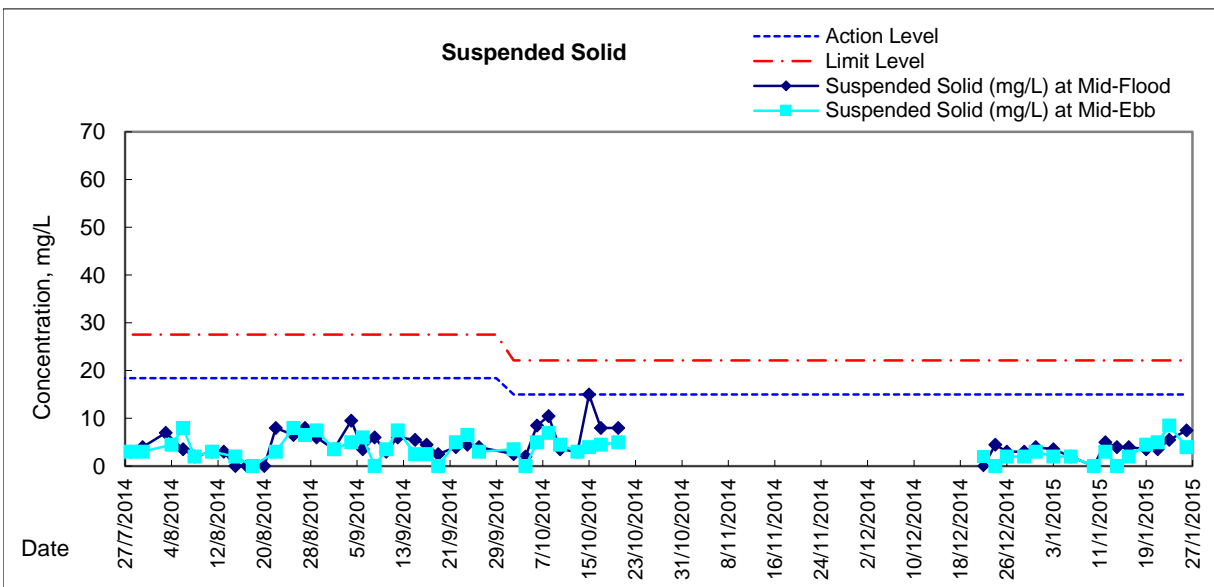
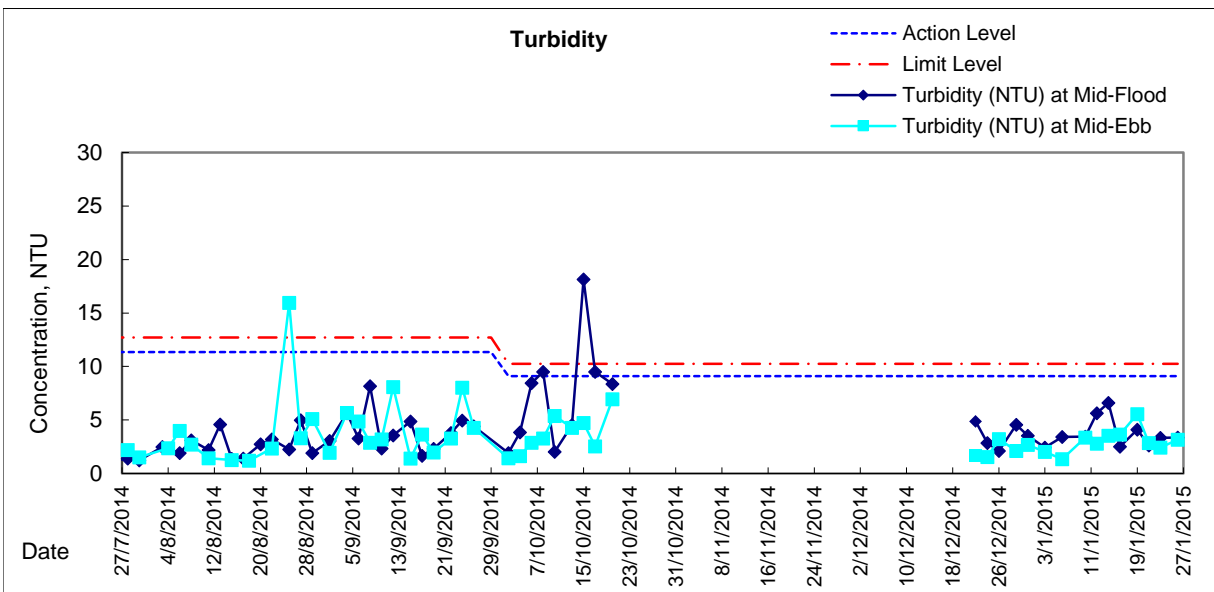
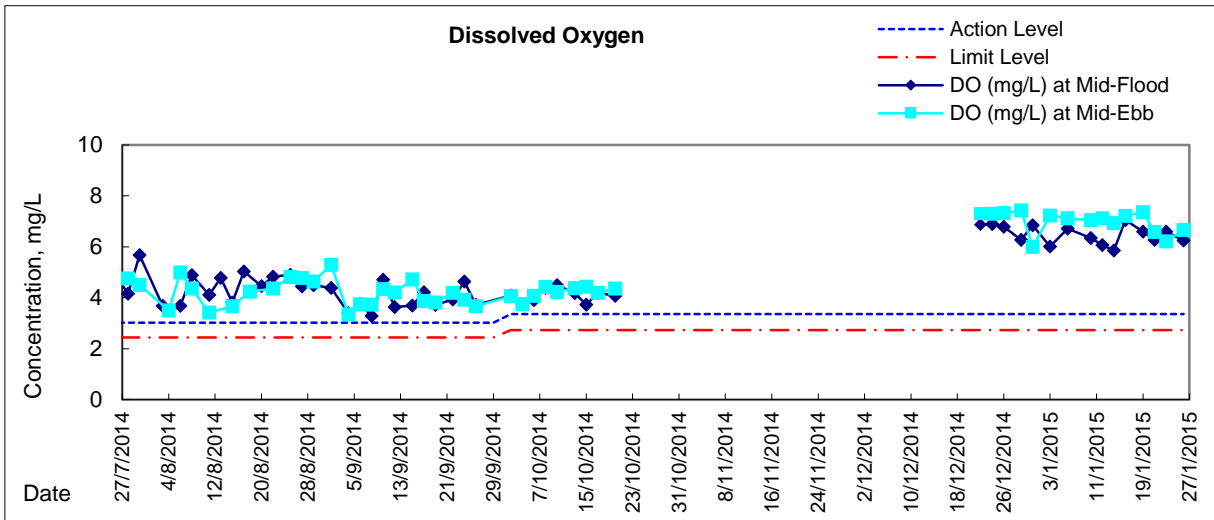


Graphic Presentation of Water Quality Result of RW21-P789 - GEC/CRC/SHK





Graphic Presentation of Water Quality Result of C7 - Windsor House



Remark: Due to malfunctioning of the intake transfer pump and resulting unavailability of seawater supply to Windsor House cooling intake pump house at the designated water tank, the water quality monitoring at the monitoring station C7 was cancelled on 8 Jan 2015 during flood tide and ebb tide.



**Water Monitoring Result at C6 - Excelsior Hotel
Mid-Flood Tide**

Date	Time	Weather Condition	Sampling Depth m	Water Temperature °C			pH		Salinity ppt		DO Saturation %		DO mg/L						
				Value	Average	Value	Average	Value	Average	Value	Average	Value	Average						
29/12/2014	-	Fine	Surface	-	-	-	-	-	-	-	-	-	-	-	-	-	-	-	
	9:48		Middle	1.5	17.20	17.20	17.2	8.19	8.19	8.2	31.02	31.02	31.0	86.8	86.6	86.7	6.94	6.92	6.93
	-		Bottom	-	-	-	-	-	-	-	-	-	-	-	-	-	-	-	-
31/12/2014	-	Fine	Surface	-	-	-	-	-	-	-	-	-	-	-	-	-	-	-	
	14:51		Middle	1.5	18.80	18.80	18.8	8.12	8.12	8.1	30.99	30.99	31.0	82.7	81.6	82.2	6.40	6.32	6.36
	-		Bottom	-	-	-	-	-	-	-	-	-	-	-	-	-	-	-	-
3/1/2015	-	Fine	Surface	-	-	-	-	-	-	-	-	-	-	-	-	-	-	-	
	17:20		Middle	1.5	17.60	17.60	17.6	8.40	8.40	8.4	31.06	31.06	31.1	84.1	82.9	83.5	6.66	6.56	6.61
	-		Bottom	-	-	-	-	-	-	-	-	-	-	-	-	-	-	-	-
6/1/2015	-	Fine	Surface	-	-	-	-	-	-	-	-	-	-	-	-	-	-	-	
	9:20		Middle	1.5	18.50	18.50	18.5	8.17	8.17	8.2	30.87	30.87	30.9	87.5	87.0	87.3	6.81	6.77	6.79
	-		Bottom	-	-	-	-	-	-	-	-	-	-	-	-	-	-	-	-
8/1/2015	-	Fine	Surface	-	-	-	-	-	-	-	-	-	-	-	-	-	-	-	
	8:25		Middle	1.5	17.30	17.30	17.3	8.16	8.16	8.2	29.58	29.58	29.6	79.0	78.8	78.9	6.37	6.35	6.36
	-		Bottom	-	-	-	-	-	-	-	-	-	-	-	-	-	-	-	-
10/1/2015	-	Fine	Surface	-	-	-	-	-	-	-	-	-	-	-	-	-	-	-	
	7:45		Middle	1.5	17.10	17.10	17.1	8.17	8.17	8.2	30.08	30.08	30.1	82.1	81.8	82.0	6.53	6.50	6.52
	-		Bottom	-	-	-	-	-	-	-	-	-	-	-	-	-	-	-	-
12/1/2015	-	Fine	Surface	-	-	-	-	-	-	-	-	-	-	-	-	-	-	-	
	10:17		Middle	1.5	17.50	17.50	17.5	8.15	8.15	8.2	30.60	30.60	30.6	76.6	75.7	76.2	6.10	6.03	6.07
	-		Bottom	-	-	-	-	-	-	-	-	-	-	-	-	-	-	-	-
14/1/2015	-	Fine	Surface	-	-	-	-	-	-	-	-	-	-	-	-	-	-	-	
	14:42		Middle	1.5	18.10	18.10	18.1	7.91	7.91	7.9	30.83	30.83	30.8	84.1	82.6	83.4	6.57	6.49	6.53
	-		Bottom	-	-	-	-	-	-	-	-	-	-	-	-	-	-	-	-
16/1/2015	-	Fine	Surface	-	-	-	-	-	-	-	-	-	-	-	-	-	-	-	
	14:50		Middle	1.5	18.90	18.90	18.9	8.16	8.16	8.2	30.52	30.52	30.5	91.2	91.3	91.3	7.06	7.06	7.06
	-		Bottom	-	-	-	-	-	-	-	-	-	-	-	-	-	-	-	-
19/1/2015	-	Fine	Surface	-	-	-	-	-	-	-	-	-	-	-	-	-	-	-	
	16:50		Middle	1.5	17.80	17.80	17.8	8.07	8.07	8.1	30.52	30.52	30.5	81.1	80.2	80.7	6.41	6.33	6.37
	-		Bottom	-	-	-	-	-	-	-	-	-	-	-	-	-	-	-	-
21/1/2015	-	Fine	Surface	-	-	-	-	-	-	-	-	-	-	-	-	-	-	-	
	18:45		Middle	1.5	17.20	17.20	17.2	8.09	8.09	8.1	30.76	30.76	30.8	73.6	72.2	72.9	5.90	5.77	5.84
	-		Bottom	-	-	-	-	-	-	-	-	-	-	-	-	-	-	-	-
23/1/2015	-	Fine	Surface	-	-	-	-	-	-	-	-	-	-	-	-	-	-	-	
	10:05		Middle	1.5	16.90	16.90	16.9	8.10	8.10	8.1	30.64	30.64	30.6	81.3	83.1	82.2	6.54	6.69	6.62
	-		Bottom	-	-	-	-	-	-	-	-	-	-	-	-	-	-	-	-
26/1/2015	-	Fine	Surface	-	-	-	-	-	-	-	-	-	-	-	-	-	-	-	
	10:38		Middle	1.5	18.00	18.00	18.0	8.06	8.06	8.1	30.71	30.71	30.7	82.3	81.2	81.8	6.48	6.39	6.44
	-		Bottom	-	-	-	-	-	-	-	-	-	-	-	-	-	-	-	-

Remarks:
Single underline denotes exceedance over Action Level.
Double underline denotes exceedance over Limit Level.



**Water Monitoring Result at Ex-WPCWA SW - South-western corners of ex-Public Cargo Works Area
Mid-Flood Tide**

Date	Time	Weather Condition	Sampling Depth m		Water Temperature °C			pH			Salinity ppt			DO Saturation %			DO mg/L		
					Value		Average	Value		Average	Value		Average	Value		Average	Value		Average
29/12/2014	9:33	Fine	Surface	1.0	17.40	17.40	17.4	8.20	8.20	8.2	28.66	28.66	28.7	69.3	68.4	68.9	5.60	5.53	5.57
	-		Middle	-	-	-	-	-	-	-	-	-	-	-	-	-	-	-	-
	9:35		Bottom	3.0	17.30	17.30	17.3	8.17	8.17	8.2	31.18	31.18	31.2	73.6	74.3	74.0	5.87	5.93	5.90
31/12/2014	14:36	Fine	Surface	1.0	18.80	18.80	18.8	8.14	8.14	8.1	28.85	28.85	28.9	72.6	71.4	72.0	5.69	5.60	5.65
	-		Middle	-	-	-	-	-	-	-	-	-	-	-	-	-	-	-	-
	14:38		Bottom	4.0	18.20	18.20	18.2	8.11	8.11	8.1	30.96	30.96	31.0	76.7	75.8	76.3	6.01	5.94	5.98
3/1/2015	17:00	Fine	Surface	1.0	17.70	17.70	17.7	8.35	8.35	8.4	31.00	31.00	31.0	74.7	75.5	75.1	5.90	5.96	5.93
	-		Middle	-	-	-	-	-	-	-	-	-	-	-	-	-	-	-	-
	17:02		Bottom	5.0	17.70	17.70	17.7	8.35	8.35	8.4	31.19	31.19	31.2	82.1	82.7	82.4	6.49	6.54	6.52
6/1/2015	9:02	Fine	Surface	1.0	18.80	18.80	18.8	8.12	8.12	8.1	25.56	25.56	25.6	63.5	63.7	63.6	5.08	5.09	5.09
	-		Middle	-	-	-	-	-	-	-	-	-	-	-	-	-	-	-	-
	9:04		Bottom	4.0	18.40	18.40	18.4	8.07	8.07	8.1	30.67	30.67	30.7	80.3	80.3	80.3	6.29	6.28	6.29
8/1/2015	8:10	Fine	Surface	1.0	17.60	17.60	17.6	8.17	8.17	8.2	31.02	31.02	31.0	75.9	76.0	76.0	6.02	6.03	6.03
	-		Middle	-	-	-	-	-	-	-	-	-	-	-	-	-	-	-	-
	8:12		Bottom	3.0	17.50	17.50	17.5	8.17	8.17	8.2	31.10	31.10	31.1	66.6	66.0	66.3	5.29	5.24	5.27
10/1/2015	7:28	Fine	Surface	1.0	17.00	17.00	17.0	8.16	8.16	8.2	31.25	31.25	31.3	71.4	71.0	71.2	5.72	5.70	5.71
	-		Middle	-	-	-	-	-	-	-	-	-	-	-	-	-	-	-	-
	7:30		Bottom	3.0	17.20	17.20	17.2	8.18	8.18	8.2	31.21	31.21	31.2	78.1	78.0	78.1	6.24	6.23	6.24
12/1/2015	9:58	Fine	Surface	1.0	17.50	17.50	17.5	8.11	8.11	8.1	30.47	30.47	30.5	74.1	74.3	74.2	5.90	5.91	5.91
	-		Middle	-	-	-	-	-	-	-	-	-	-	-	-	-	-	-	-
	9:56		Bottom	3.0	17.40	17.40	17.4	8.10	8.10	8.1	30.84	30.84	30.8	75.1	75.0	75.1	5.98	5.98	5.98
14/1/2015	14:15	Fine	Surface	1.0	17.70	17.70	17.7	7.93	7.93	7.9	29.68	29.68	29.7	67.3	67.0	67.2	5.36	5.33	5.35
	-		Middle	-	-	-	-	-	-	-	-	-	-	-	-	-	-	-	-
	14:17		Bottom	4.0	17.90	17.90	17.9	7.90	7.90	7.9	30.17	30.17	30.2	82.8	81.6	82.2	6.54	6.45	6.50
16/1/2015	14:30	Fine	Surface	1.0	18.20	18.20	18.2	8.14	8.14	8.1	28.45	28.45	28.5	87.1	85.1	86.1	6.91	6.76	6.84
	-		Middle	-	-	-	-	-	-	-	-	-	-	-	-	-	-	-	-
	14:32		Bottom	3.0	18.00	18.00	18.0	8.11	8.11	8.1	30.60	30.60	30.6	84.6	84.2	84.4	6.69	6.66	6.68
19/1/2015	16:22	Fine	Surface	1.0	17.80	17.80	17.8	8.07	8.07	8.1	30.44	30.44	30.4	81.9	82.1	82.0	6.48	6.50	6.49
	-		Middle	-	-	-	-	-	-	-	-	-	-	-	-	-	-	-	-
	16:24		Bottom	4.0	17.20	17.20	17.2	8.10	8.10	8.1	30.96	30.96	31.0	84.1	83.9	84.0	6.71	6.70	6.71
21/1/2015	18:12	Fine	Surface	1.0	17.50	17.50	17.5	8.08	8.08	8.1	30.17	30.17	30.2	76.1	75.6	75.9	6.07	6.03	6.05
	-		Middle	-	-	-	-	-	-	-	-	-	-	-	-	-	-	-	-
	18:14		Bottom	4.0	17.20	17.20	17.2	8.09	8.09	8.1	30.73	30.73	30.7	77.9	77.0	77.5	6.23	6.15	6.19
23/1/2015	9:47	Fine	Surface	1.0	17.00	17.00	17.0	8.06	8.06	8.1	27.36	27.36	27.4	70.9	70.2	70.6	6.81	6.75	6.78
	-		Middle	-	-	-	-	-	-	-	-	-	-	-	-	-	-	-	-
	9:49		Bottom	4.0	16.70	16.70	16.7	8.08	8.08	8.1	30.89	30.89	30.9	76.5	76.5	76.5	6.17	6.17	6.17
26/1/2015	10:20	Fine	Surface	1.0	17.80	17.80	17.8	7.98	7.98	8.0	29.39	29.39	29.4	72.4	72.8	72.6	5.75	5.78	5.77
	-		Middle	-	-	-	-	-	-	-	-	-	-	-	-	-	-	-	-
	10:22		Bottom	3.0	17.60	17.60	17.6	8.02	8.02	8.0	30.77	30.77	30.8	83.0	82.3	82.7	6.59	6.53	6.56

Remarks:
Single underline denotes exceedance over Action Level.
Double underline denotes exceedance over Limit Level.



**Water Monitoring Result at Ex-WPCWA SE - South-eastern corners of ex-Public Cargo Works Area
Mid-Flood Tide**

Date	Time	Weather Condition	Sampling Depth m		Water Temperature °C			pH			Salinity ppt			DO Saturation %			DO mg/L			
					Value	Average	Value	Average	Value	Average	Value	Average	Value	Average	Value	Average				
29/12/2014	9:38	Fine	Surface	1.0	17.40	17.40	17.4	8.20	8.20	8.2	30.68	30.68	30.7	79.9	80.4	80.2	6.37	6.42	6.40	
	-		Middle	-	-	-	-	-	-	-	-	-	-	-	-	-	-	-	-	-
	9:40		Bottom	4.0	17.30	17.30	17.3	8.20	8.20	8.2	31.16	31.16	31.2	78.4	78.5	78.5	6.24	6.25	6.25	
31/12/2014	14:40	Fine	Surface	1.0	18.40	18.40	18.4	8.15	8.15	8.2	30.50	30.50	30.5	77.4	76.5	77.0	6.05	5.98	6.02	
	-		Middle	-	-	-	-	-	-	-	-	-	-	-	-	-	-	-	-	-
	14:42		Bottom	4.0	18.30	18.30	18.3	8.16	8.16	8.2	31.12	31.12	31.1	75.7	75.2	75.5	5.90	5.87	5.89	
3/1/2015	17:09	Fine	Surface	1.0	17.60	17.60	17.6	8.70	8.70	8.7	30.98	30.98	31.0	79.2	79.1	79.2	6.28	6.27	6.28	
	-		Middle	-	-	-	-	-	-	-	-	-	-	-	-	-	-	-	-	-
	17:11		Bottom	5.0	17.60	17.60	17.6	8.74	8.71	8.7	30.70	30.70	30.7	79.1	79.5	79.3	6.27	6.31	6.29	
6/1/2015	9:09	Fine	Surface	1.0	18.70	18.70	18.7	8.16	8.16	8.2	30.16	30.16	30.2	77.3	75.3	76.3	6.03	5.87	5.95	
	-		Middle	-	-	-	-	-	-	-	-	-	-	-	-	-	-	-	-	-
	9:11		Bottom	4.0	18.80	18.80	18.8	8.17	8.17	8.2	30.63	30.63	30.6	80.3	78.3	79.3	6.27	6.11	6.19	
8/1/2015	8:15	Fine	Surface	1.0	17.70	17.70	17.7	8.17	8.17	8.2	30.67	30.67	30.7	74.3	75.3	74.8	5.89	5.98	5.94	
	-		Middle	-	-	-	-	-	-	-	-	-	-	-	-	-	-	-	-	-
	8:17		Bottom	4.0	17.60	17.60	17.6	8.21	8.21	8.2	30.54	30.54	30.5	68.5	68.7	68.6	5.44	5.45	5.45	
10/1/2015	7:32	Fine	Surface	1.0	17.30	17.30	17.3	8.18	8.18	8.2	31.26	31.26	31.3	69.1	69.5	69.3	5.51	5.54	5.53	
	-		Middle	-	-	-	-	-	-	-	-	-	-	-	-	-	-	-	-	-
	7:34		Bottom	4.0	17.50	17.50	17.5	8.17	8.17	8.2	31.24	31.24	31.2	70.3	71.3	70.8	5.59	5.67	5.63	
12/1/2015	10:05	Fine	Surface	1.0	17.60	17.60	17.6	8.12	8.12	8.1	30.69	30.69	30.7	69.4	71.0	70.2	5.52	5.64	5.58	
	-		Middle	-	-	-	-	-	-	-	-	-	-	-	-	-	-	-	-	-
	10:03		Bottom	4.0	17.50	17.50	17.5	8.11	8.11	8.1	30.85	30.85	30.9	75.8	75.5	75.7	6.02	6.00	6.01	
14/1/2015	14:27	Fine	Surface	1.0	17.80	17.80	17.8	7.96	7.96	8.0	29.47	29.47	29.5	64.9	65.3	65.1	5.15	5.21	5.18	
	-		Middle	-	-	-	-	-	-	-	-	-	-	-	-	-	-	-	-	-
	14:29		Bottom	4.0	17.90	17.90	17.9	7.94	7.94	7.9	30.23	30.23	30.2	67.3	67.6	67.5	5.43	5.44	5.44	
16/1/2015	14:35	Fine	Surface	1.0	18.70	18.70	18.7	8.19	8.19	8.2	26.41	26.41	26.4	72.2	74.4	73.3	5.76	5.93	5.85	
	-		Middle	-	-	-	-	-	-	-	-	-	-	-	-	-	-	-	-	-
	14:37		Bottom	3.0	17.80	17.80	17.8	8.13	8.13	8.1	30.81	30.81	30.8	85.7	85.2	85.5	6.77	6.73	6.75	
19/1/2015	16:30	Fine	Surface	1.0	17.40	17.40	17.4	8.09	8.09	8.1	30.72	30.72	30.7	79.2	78.4	78.8	6.30	6.24	6.27	
	-		Middle	-	-	-	-	-	-	-	-	-	-	-	-	-	-	-	-	-
	16:32		Bottom	4.0	17.20	17.20	17.2	8.08	8.08	8.1	30.84	30.84	30.8	72.0	70.8	71.4	6.74	6.66	6.70	
21/1/2015	18:16	Fine	Surface	1.0	17.30	17.30	17.3	8.12	8.12	8.1	29.27	29.27	29.3	73.8	73.4	73.6	6.94	6.90	6.92	
	-		Middle	-	-	-	-	-	-	-	-	-	-	-	-	-	-	-	-	-
	18:18		Bottom	4.0	17.20	17.20	17.2	8.10	8.10	8.1	30.73	30.73	30.7	77.6	76.4	77.0	6.20	6.10	6.15	
23/1/2015	9:51	Fine	Surface	1.0	16.80	16.80	16.8	8.08	8.08	8.1	30.96	30.96	31.0	75.5	74.2	74.9	6.07	5.98	6.03	
	-		Middle	-	-	-	-	-	-	-	-	-	-	-	-	-	-	-	-	-
	9:53		Bottom	4.0	16.60	16.60	16.6	8.09	8.09	8.1	31.12	31.12	31.1	81.9	82.2	82.1	6.60	6.63	6.62	
26/1/2015	10:25	Fine	Surface	1.0	18.00	18.00	18.0	7.86	7.86	7.9	26.70	26.70	26.7	68.9	69.3	69.1	5.55	5.58	5.57	
	-		Middle	-	-	-	-	-	-	-	-	-	-	-	-	-	-	-	-	-
	10:27		Bottom	4.0	17.80	17.80	17.8	8.01	8.01	8.0	30.13	30.13	30.1	76.1	76.5	76.3	6.05	6.00	6.03	

Remarks:
Single underline denotes exceedance over Action Level.
Double underline denotes exceedance over Limit Level.



**Water Monitoring Result at C6 - Excelsior Hotel
Mid-Ebb Tide**

Date	Time	Weather Condition	Sampling Depth		Water Temperature			pH		Salinity		DO Saturation		DO					
					°C			-		ppt		%		mg/L					
			m	Value	Average	Value	Average	Value	Average	Value	Average	Value	Average	Value	Average				
29/12/2014	-	Cloudy	Surface	-	-	-	-	-	-	-	-	-	-	-	-	-	-	-	
	3:20		Middle	1.5	15.20	15.20	15.2	7.83	7.83	7.8	27.23	27.23	27.2	75.2	74.9	75.1	6.39	6.37	6.38
	-		Bottom	-	-	-	-	-	-	-	-	-	-	-	-	-	-	-	-
31/12/2014	0:00	Fine	Surface	-	-	-	-	-	-	-	-	-	-	-	-	-	-	-	-
	20:00		Middle	1.5	17.80	17.80	17.8	8.13	8.13	8.1	30.70	30.70	30.7	75.1	73.1	74.1	5.93	5.77	5.85
	0:00		Bottom	-	-	-	-	-	-	-	-	-	-	-	-	-	-	-	-
3/1/2015	-	Cloudy	Surface	-	-	-	-	-	-	-	-	-	-	-	-	-	-	-	-
	23:03		Middle	1.0	17.20	17.20	17.2	7.91	7.91	7.9	30.14	30.14	30.1	82.7	83.1	82.9	6.64	6.67	6.66
	-		Bottom	-	-	-	-	-	-	-	-	-	-	-	-	-	-	-	-
6/1/2015	-	Cloudy	Surface	-	-	-	-	-	-	-	-	-	-	-	-	-	-	-	-
	0:18		Middle	1.0	18.80	18.80	18.8	7.75	7.75	7.8	24.81	24.89	24.9	58.8	58.7	58.8	4.71	4.71	4.71
	-		Bottom	-	-	-	-	-	-	-	-	-	-	-	-	-	-	-	-
8/1/2015	-	Cloudy	Surface	-	-	-	-	-	-	-	-	-	-	-	-	-	-	-	-
	23:35		Middle	1.5	17.40	17.40	17.4	7.83	7.83	7.8	29.41	29.41	29.4	72.3	73.1	72.7	5.81	5.88	5.85
	-		Bottom	-	-	-	-	-	-	-	-	-	-	-	-	-	-	-	-
10/1/2015	-	Cloudy	Surface	-	-	-	-	-	-	-	-	-	-	-	-	-	-	-	-
	0:25		Middle	1.5	16.90	16.90	16.9	7.95	7.95	8.0	29.24	29.24	29.2	74.9	75.2	75.1	6.09	6.11	6.10
	-		Bottom	-	-	-	-	-	-	-	-	-	-	-	-	-	-	-	-
12/1/2015	-	Cloudy	Surface	-	-	-	-	-	-	-	-	-	-	-	-	-	-	-	-
	2:16		Middle	1.5	17.20	17.20	17.2	7.76	7.76	7.8	25.30	25.30	25.3	55.2	55.1	55.2	4.57	4.56	4.57
	-		Bottom	-	-	-	-	-	-	-	-	-	-	-	-	-	-	-	-
14/1/2015	-	Fine	Surface	-	-	-	-	-	-	-	-	-	-	-	-	-	-	-	-
	20:35		Middle	1.5	15.80	15.80	15.8	7.93	7.93	7.9	25.80	25.74	25.8	74.9	75.7	75.3	6.37	6.44	6.41
	-		Bottom	-	-	-	-	-	-	-	-	-	-	-	-	-	-	-	-
16/1/2015	-	Cloudy	Surface	-	-	-	-	-	-	-	-	-	-	-	-	-	-	-	-
	20:42		Middle	1.5	17.50	17.50	17.5	7.83	7.83	7.8	29.64	29.64	29.6	76.2	77.7	77.0	6.11	6.22	6.17
	-		Bottom	-	-	-	-	-	-	-	-	-	-	-	-	-	-	-	-
19/1/2015	-	Cloudy	Surface	-	-	-	-	-	-	-	-	-	-	-	-	-	-	-	-
	23:16		Middle	1.5	16.10	16.10	16.1	7.96	7.96	8.0	30.46	30.46	30.5	83.2	82.7	83.0	6.81	6.75	6.78
	-		Bottom	-	-	-	-	-	-	-	-	-	-	-	-	-	-	-	-
21/1/2015	-	Fine	Surface	-	-	-	-	-	-	-	-	-	-	-	-	-	-	-	-
	14:25		Middle	1.5	17.70	17.70	17.7	8.08	8.08	8.1	30.55	30.55	30.6	80.2	81.3	80.8	6.34	6.42	6.38
	-		Bottom	-	-	-	-	-	-	-	-	-	-	-	-	-	-	-	-
23/1/2015	-	Fine	Surface	-	-	-	-	-	-	-	-	-	-	-	-	-	-	-	-
	15:27		Middle	1.5	17.50	17.50	17.5	8.06	8.06	8.1	30.74	30.74	30.7	73.2	73.0	73.1	5.80	5.79	5.80
	-		Bottom	-	-	-	-	-	-	-	-	-	-	-	-	-	-	-	-
26/1/2015	15:25	Fine	Surface	1.0	19.00	19.00	19.0	8.01	8.01	8.0	31.08	31.08	31.1	83.1	84.5	83.8	6.36	6.46	6.41
	-		Middle	-	-	-	-	-	-	-	-	-	-	-	-	-	-	-	-
	15:27		Bottom	3.0	19.40	19.40	19.4	8.04	8.04	8.0	30.17	30.17	30.2	86.0	86.7	86.4	6.70	6.74	6.72

Remarks:
Single underline denotes exceedance over Action Level.
Double underline denotes exceedance over Limit Level.



**Water Monitoring Result at Ex-WPCWA SW - South-western corners of ex-Public Cargo Works Area
Mid-Ebb Tide**

Date	Time	Weather Condition	Sampling Depth		Water Temperature			pH			Salinity			DO Saturation			DO		
					°C			-			ppt			%			mg/L		
			m	Value	Average	Value	Average	Value	Average	Value	Average	Value	Average	Value	Average	Value	Average		
29/12/2014	4:20	Cloudy	Surface	1.0	15.40	15.40	15.4	7.94	7.94	7.9	22.30	22.32	22.3	71.8	71.4	71.6	6.25	6.23	6.24
	-		Middle	-	-	-	-	-	-	-	-	-	-	-	-	-	-	-	-
	4:22		Bottom	5.0	15.40	15.40	15.4	7.91	7.91	7.9	22.05	22.05	22.1	71.0	71.1	71.1	6.18	6.20	6.19
31/12/2014	19:44	Fine	Surface	1.0	17.90	17.90	17.9	8.13	8.13	8.1	31.21	31.21	31.2	74.9	73.7	74.3	5.89	5.80	5.85
	-		Middle	-	-	-	-	-	-	-	-	-	-	-	-	-	-	-	-
	19:46		Bottom	5.0	17.80	17.80	17.8	8.14	8.14	8.1	31.28	31.28	31.3	70.9	69.8	70.4	5.58	5.50	5.54
3/1/2015	0:32	Cloudy	Surface	1.0	17.20	17.20	17.2	8.00	8.00	8.0	23.55	23.55	23.6	65.2	65.1	65.2	5.44	5.43	5.44
	-		Middle	-	-	-	-	-	-	-	-	-	-	-	-	-	-	-	-
	0:34		Bottom	4.0	17.20	17.20	17.2	8.00	8.01	8.0	23.06	23.16	23.1	67.7	67.6	67.7	5.66	5.65	5.66
6/1/2015	1:35	Cloudy	Surface	1.0	18.80	18.80	18.8	7.82	7.82	7.8	20.76	20.76	20.8	51.3	51.3	51.3	4.22	4.22	4.22
	-		Middle	-	-	-	-	-	-	-	-	-	-	-	-	-	-	-	-
	1:37		Bottom	4.0	18.80	18.80	18.8	7.78	7.78	7.8	20.67	20.69	20.7	58.7	59.3	59.0	4.83	4.88	4.86
8/1/2015	1:15	Cloudy	Surface	1.0	17.30	17.40	17.4	7.92	7.92	7.9	23.81	23.81	23.8	61.8	61.9	61.9	5.13	5.15	5.14
	-		Middle	-	-	-	-	-	-	-	-	-	-	-	-	-	-	-	-
	1:17		Bottom	4.0	17.30	17.30	17.3	7.89	7.89	7.9	23.84	23.84	23.8	62.2	62.2	62.2	5.18	5.18	5.18
10/1/2015	2:15	Cloudy	Surface	1.0	16.90	16.90	16.9	8.01	8.01	8.0	24.36	24.38	24.4	65.2	64.4	64.8	5.46	5.42	5.44
	-		Middle	-	-	-	-	-	-	-	-	-	-	-	-	-	-	-	-
	2:17		Bottom	5.0	16.80	16.80	16.8	8.00	8.00	8.0	24.23	24.23	24.2	65.7	65.9	65.8	5.51	5.61	5.56
12/1/2015	3:03	Cloudy	Surface	1.0	17.30	17.30	17.3	7.91	7.91	7.9	22.38	22.38	22.4	56.4	56.6	56.5	4.73	4.75	4.74
	-		Middle	-	-	-	-	-	-	-	-	-	-	-	-	-	-	-	-
	3:05		Bottom	4.0	17.30	17.20	17.3	7.89	7.89	7.9	22.47	22.49	22.5	59.7	59.8	59.8	5.02	5.02	5.02
14/1/2015	20:05	Fine	Surface	1.0	15.70	15.70	15.7	7.97	7.97	8.0	24.03	24.03	24.0	67.5	66.1	66.8	5.82	5.67	5.75
	-		Middle	-	-	-	-	-	-	-	-	-	-	-	-	-	-	-	-
	20:07		Bottom	5.0	15.60	15.60	15.6	7.99	7.99	8.0	24.02	24.02	24.0	65.9	65.6	65.8	5.67	5.66	5.67
16/1/2015	20:17	Cloudy	Surface	1.0	17.40	17.40	17.4	7.91	7.91	7.9	25.57	25.60	25.6	66.2	66.7	66.5	5.68	5.68	5.68
	-		Middle	-	-	-	-	-	-	-	-	-	-	-	-	-	-	-	-
	20:19		Bottom	5.0	17.40	17.40	17.4	7.90	7.90	7.9	25.63	25.63	25.6	66.7	69.4	68.1	5.68	5.70	5.69
19/1/2015	0:32	Cloudy	Surface	1.0	16.00	16.00	16.0	8.04	8.04	8.0	23.89	23.90	23.9	68.5	66.9	67.7	5.83	5.71	5.77
	-		Middle	-	-	-	-	-	-	-	-	-	-	-	-	-	-	-	-
	0:34		Bottom	4.0	16.00	16.00	16.0	8.03	8.03	8.0	23.91	23.91	23.9	68.6	69.6	69.1	5.88	6.01	5.95
21/1/2015	14:14	Fine	Surface	1.0	17.60	17.60	17.6	8.07	8.07	8.1	29.89	29.89	29.9	76.9	76.6	76.8	6.14	6.11	6.13
	-		Middle	-	-	-	-	-	-	-	-	-	-	-	-	-	-	-	-
	14:12		Bottom	4.0	17.50	17.50	17.5	8.07	8.07	8.1	30.87	30.87	30.9	78.8	78.6	78.7	6.25	6.22	6.24
23/1/2015	15:13	Fine	Surface	1.0	17.70	17.70	17.7	8.06	8.06	8.1	28.84	28.84	28.8	71.1	70.9	71.0	6.68	6.67	6.68
	-		Middle	-	-	-	-	-	-	-	-	-	-	-	-	-	-	-	-
	15:15		Bottom	4.0	17.70	17.70	17.7	8.06	8.06	8.1	27.66	27.66	27.7	66.9	64.4	65.7	5.40	5.20	5.30
26/1/2015	17:30	Fine	Surface	1.0	17.70	17.70	17.7	8.01	8.01	8.0	30.41	30.41	30.4	77.5	76.7	77.1	6.14	6.08	6.11
	-		Middle	-	-	-	-	-	-	-	-	-	-	-	-	-	-	-	-
	17:32		Bottom	4.0	17.50	17.50	17.5	8.02	8.02	8.0	31.08	31.08	31.1	75.3	75.1	75.2	5.95	5.95	5.95

Remarks:
Single underline denotes exceedance over Action Level.
Double underline denotes exceedance over Limit Level.



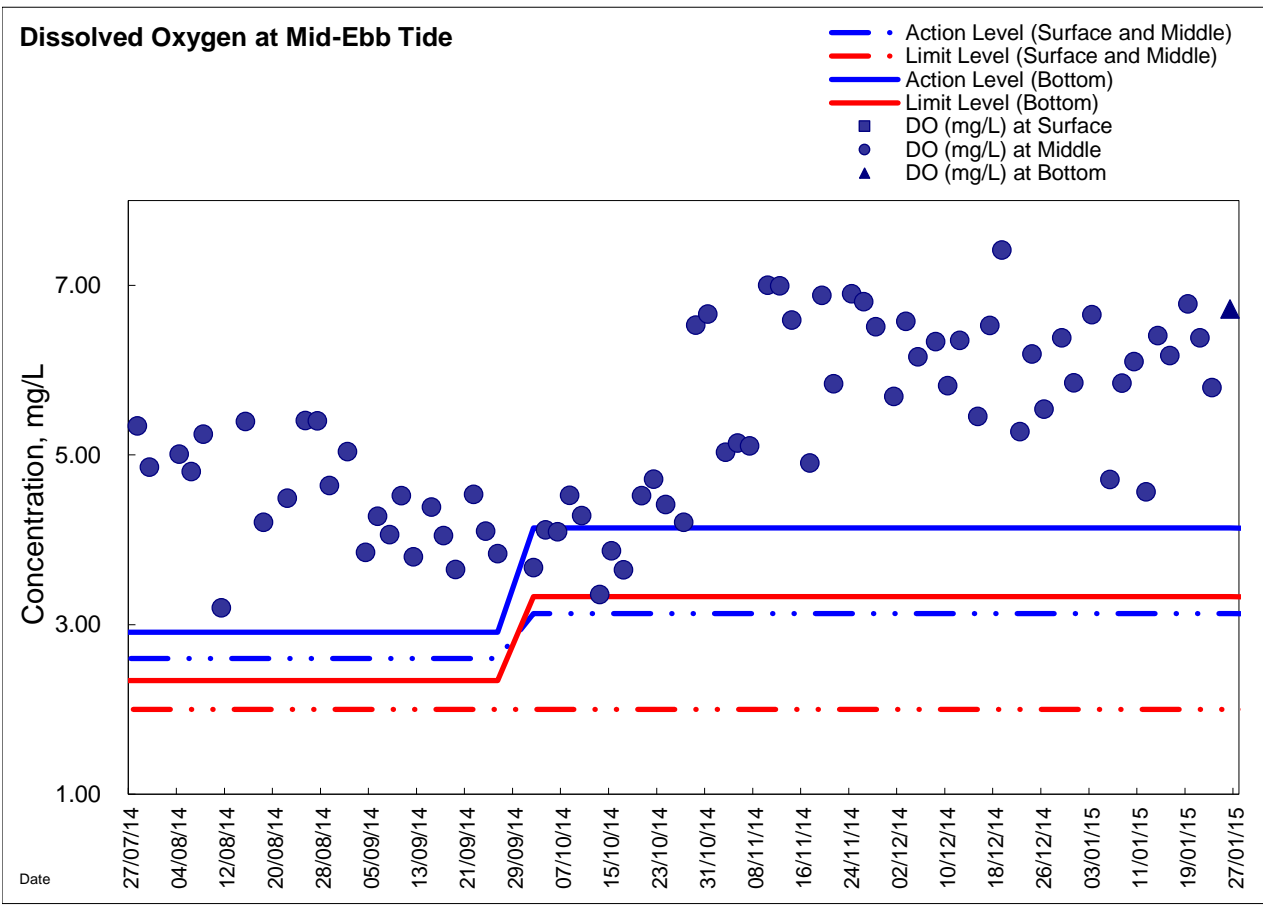
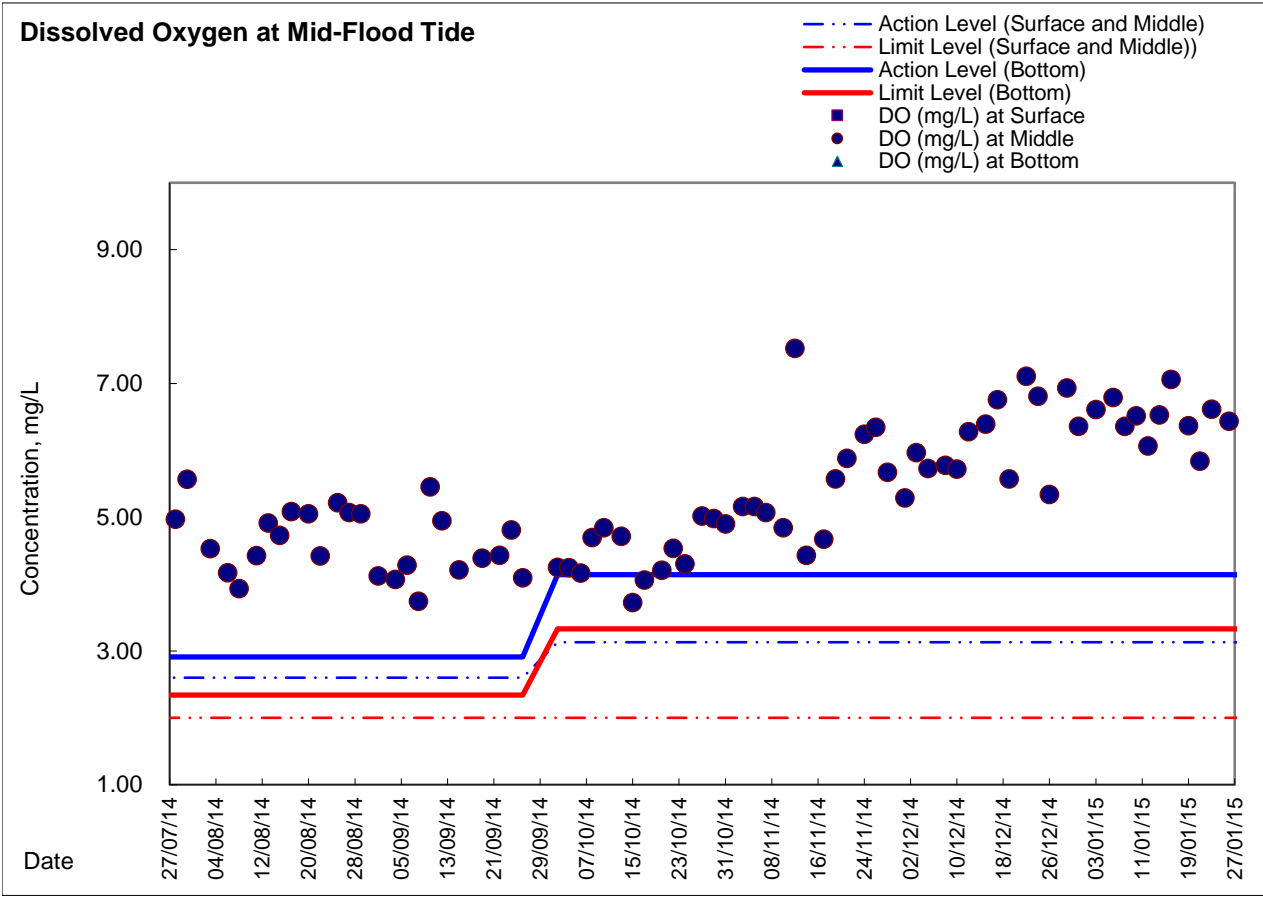
**Water Monitoring Result at Ex-WPCWA SE - South-eastern corners of ex-Public Cargo Works Area
Mid-Ebb Tide**

Date	Time	Weather Condition	Sampling Depth		Water Temperature			pH			Salinity		DO Saturation		DO				
					°C			-			ppt		%		mg/L				
			m	Value	Average	Value	Average	Value	Average	Value	Average	Value	Average	Value	Average				
29/12/2014	4:26	Cloudy	Surface	1.0	15.30	15.30	15.3	7.92	7.92	7.9	21.77	21.77	21.8	70.0	69.5	69.8	6.12	6.08	6.10
	-		Middle	-	-	-	-	-	-	-	-	-	-	-	-	-	-	-	-
	4:28		Bottom	5.0	15.40	15.40	15.4	7.93	7.92	7.9	21.83	21.83	21.8	69.2	69.7	69.5	6.06	6.10	6.08
31/12/2014	19:48	Fine	Surface	1.0	17.90	17.90	17.9	8.15	8.15	8.2	31.29	31.29	31.3	72.3	71.9	72.1	5.70	5.67	5.69
	0:00		Middle	-	-	-	-	-	-	-	-	-	-	-	-	-	-	-	-
	19:50		Bottom	5.0	17.80	17.80	17.8	8.16	8.16	8.2	30.66	30.66	30.7	74.0	73.3	73.7	5.83	5.77	5.80
3/1/2015	0:38	Cloudy	Surface	1.0	17.20	17.20	17.2	7.99	7.99	8.0	23.27	23.33	23.3	62.0	62.4	62.2	5.18	5.22	5.20
	-		Middle	-	-	-	-	-	-	-	-	-	-	-	-	-	-	-	-
	0:40		Bottom	4.0	17.20	17.20	17.2	8.01	8.01	8.0	23.34	23.34	23.3	65.2	65.6	65.4	5.45	5.48	5.47
6/1/2015	1:39	Cloudy	Surface	1.0	18.80	18.80	18.8	7.74	7.74	7.7	20.54	20.59	20.6	53.2	54.2	53.7	4.39	4.46	4.43
	-		Middle	-	-	-	-	-	-	-	-	-	-	-	-	-	-	-	-
	1:41		Bottom	4.0	18.80	18.80	18.8	7.72	7.72	7.7	20.60	20.61	20.6	65.2	65.7	65.5	5.40	5.42	5.41
8/1/2015	1:21	Cloudy	Surface	1.0	17.30	17.30	17.3	7.86	7.86	7.9	23.08	23.08	23.1	57.9	59.0	58.5	4.84	4.93	4.89
	-		Middle	-	-	-	-	-	-	-	-	-	-	-	-	-	-	-	-
	1:23		Bottom	4.0	17.20	17.20	17.2	7.83	7.83	7.8	23.61	23.61	23.6	65.2	65.8	65.5	5.45	5.50	5.48
10/1/2015	2:24	Cloudy	Surface	1.0	16.80	16.80	16.8	7.98	7.98	8.0	24.17	24.16	24.2	65.2	65.1	65.2	5.46	5.45	5.46
	-		Middle	-	-	-	-	-	-	-	-	-	-	-	-	-	-	-	-
	2:26		Bottom	5.0	16.80	16.80	16.8	7.94	7.94	7.9	24.11	24.11	24.1	66.7	66.9	66.8	5.59	5.60	5.60
12/1/2015	3:08	Cloudy	Surface	1.0	17.20	17.20	17.2	7.85	7.85	7.9	22.22	22.22	22.2	55.9	56.2	56.1	4.70	4.73	4.72
	-		Middle	-	-	-	-	-	-	-	-	-	-	-	-	-	-	-	-
	3:10		Bottom	4.0	17.20	17.20	17.2	7.85	7.85	7.9	22.23	22.23	22.2	64.3	64.9	64.6	5.44	5.47	5.46
14/1/2015	20:11	Fine	Surface	1.0	15.70	15.70	15.7	8.01	8.01	8.0	23.93	23.93	23.9	62.5	63.9	63.2	5.40	5.50	5.45
	-		Middle	-	-	-	-	-	-	-	-	-	-	-	-	-	-	-	-
	20:13		Bottom	5.0	15.60	15.60	15.6	8.01	8.01	8.0	23.37	23.37	23.4	64.4	64.0	64.2	5.69	5.54	5.62
16/1/2015	20:22	Cloudy	Surface	1.0	17.40	17.40	17.4	7.89	7.89	7.9	25.15	25.15	25.2	65.0	65.2	65.1	5.36	5.36	5.36
	-		Middle	-	-	-	-	-	-	-	-	-	-	-	-	-	-	-	-
	20:24		Bottom	5.0	17.40	17.40	17.4	7.89	7.89	7.9	25.26	25.26	25.3	66.4	67.8	67.1	5.49	5.58	5.54
19/1/2015	0:39	Cloudy	Surface	1.0	15.90	15.90	15.9	8.03	8.03	8.0	23.03	23.03	23.0	67.7	68.0	67.9	5.82	5.84	5.83
	-		Middle	-	-	-	-	-	-	-	-	-	-	-	-	-	-	-	-
	0:41		Bottom	4.0	15.90	15.90	15.9	8.02	8.02	8.0	23.02	23.02	23.0	68.6	68.9	68.8	5.89	5.92	5.91
21/1/2015	14:16	Fine	Surface	1.0	18.00	18.00	18.0	8.08	8.08	8.1	28.56	28.56	28.6	76.0	75.7	75.9	6.06	6.04	6.05
	-		Middle	-	-	-	-	-	-	-	-	-	-	-	-	-	-	-	-
	14:18		Bottom	4.0	17.60	17.60	17.6	8.00	8.00	8.0	30.70	30.70	30.7	76.1	75.6	75.9	6.05	6.01	6.03
23/1/2015	15:17	Fine	Surface	1.0	17.90	17.90	17.9	8.06	8.06	8.1	26.96	26.96	27.0	66.8	66.9	66.9	5.39	5.39	5.39
	-		Middle	-	-	-	-	-	-	-	-	-	-	-	-	-	-	-	-
	15:19		Bottom	4.0	17.70	17.70	17.7	8.06	8.06	8.1	27.55	27.55	27.6	65.2	65.0	65.1	5.25	5.20	<u>5.23</u>
26/1/2015	17:45	Fine	Surface	1.0	17.70	17.70	17.7	8.10	8.10	8.1	29.01	29.01	29.0	73.8	73.3	73.6	5.90	5.86	5.88
	-		Middle	-	-	-	-	-	-	-	-	-	-	-	-	-	-	-	-
	17:47		Bottom	4.0	17.60	17.60	17.6	8.10	8.10	8.1	30.10	30.10	30.1	74.1	73.3	73.7	5.90	5.84	5.87

Remarks:
Single underline denotes exceedance over Action Level.
Double underline denotes exceedance over Limit Level.

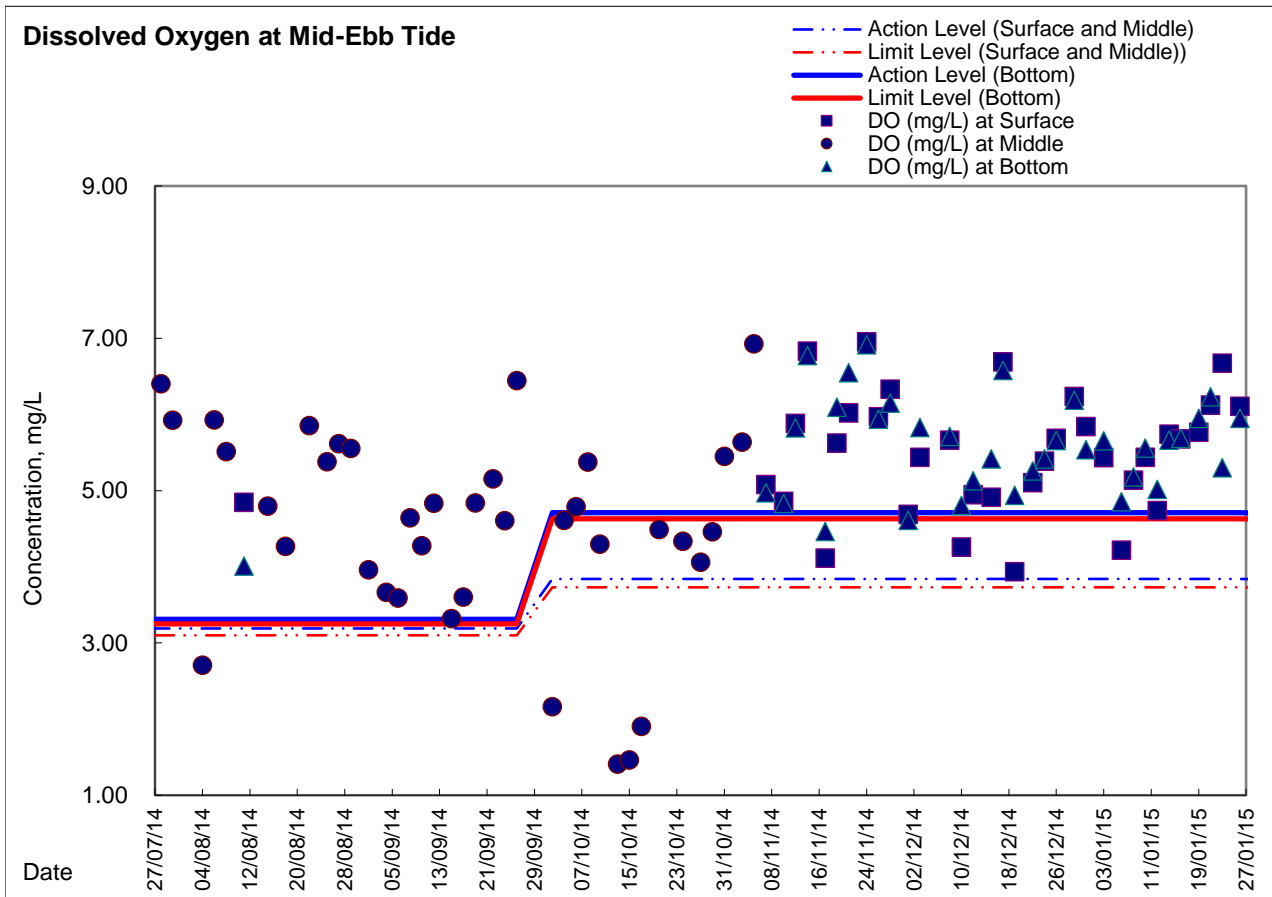
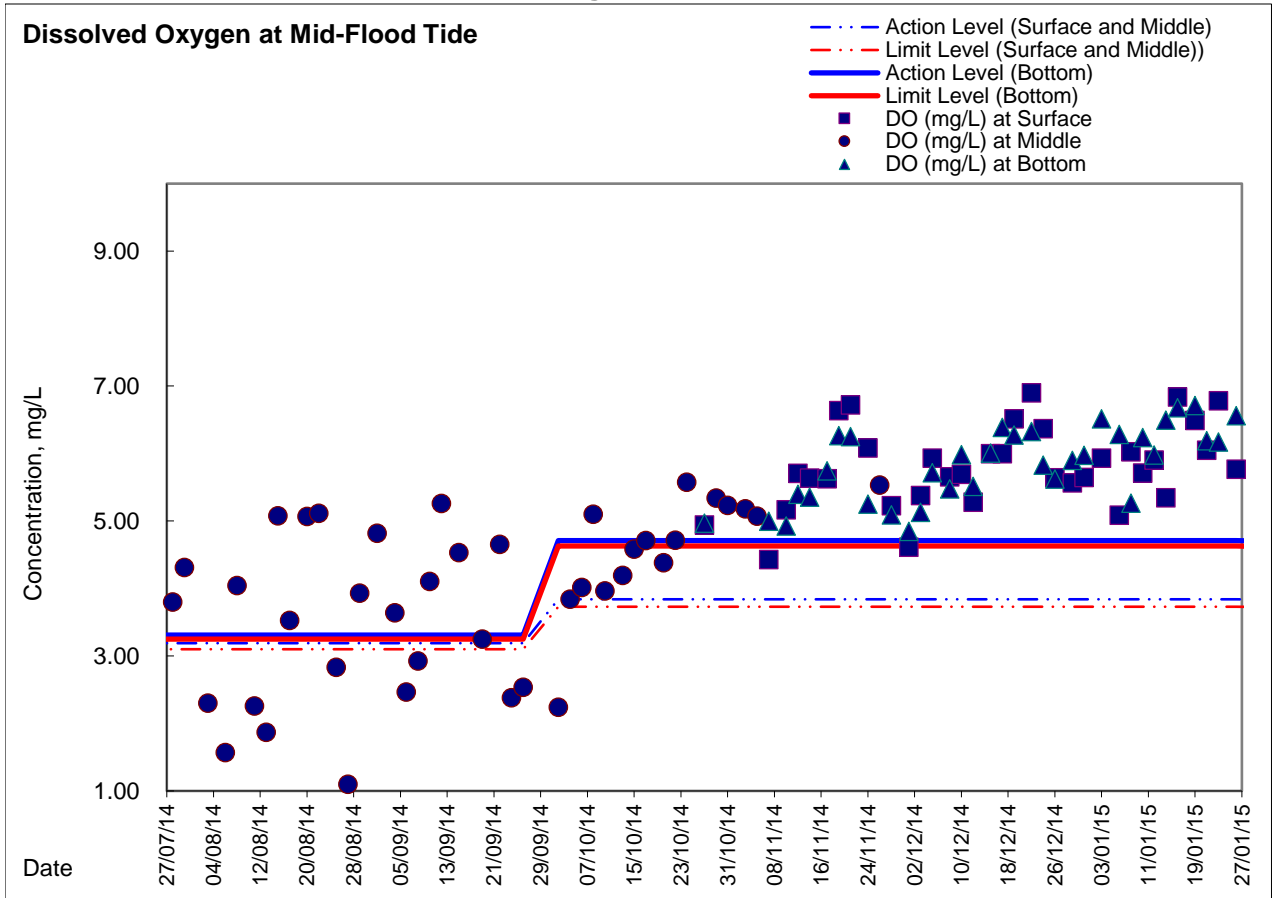


Graphic Presentation of Enhanced Water Monitoring Results (DO) at C6 - Excelsior Hotel





Graphic Presentation of Enhanced Water Monitoring Results (DO) at Ex-WPCWA SW - South-western corners of ex-Public Cargo Works Area





Graphic Presentation of Enhanced Water Monitoring Results (DO) at Ex-WPCWA SE - South-eastern corners of ex-Public Cargo Works Area

